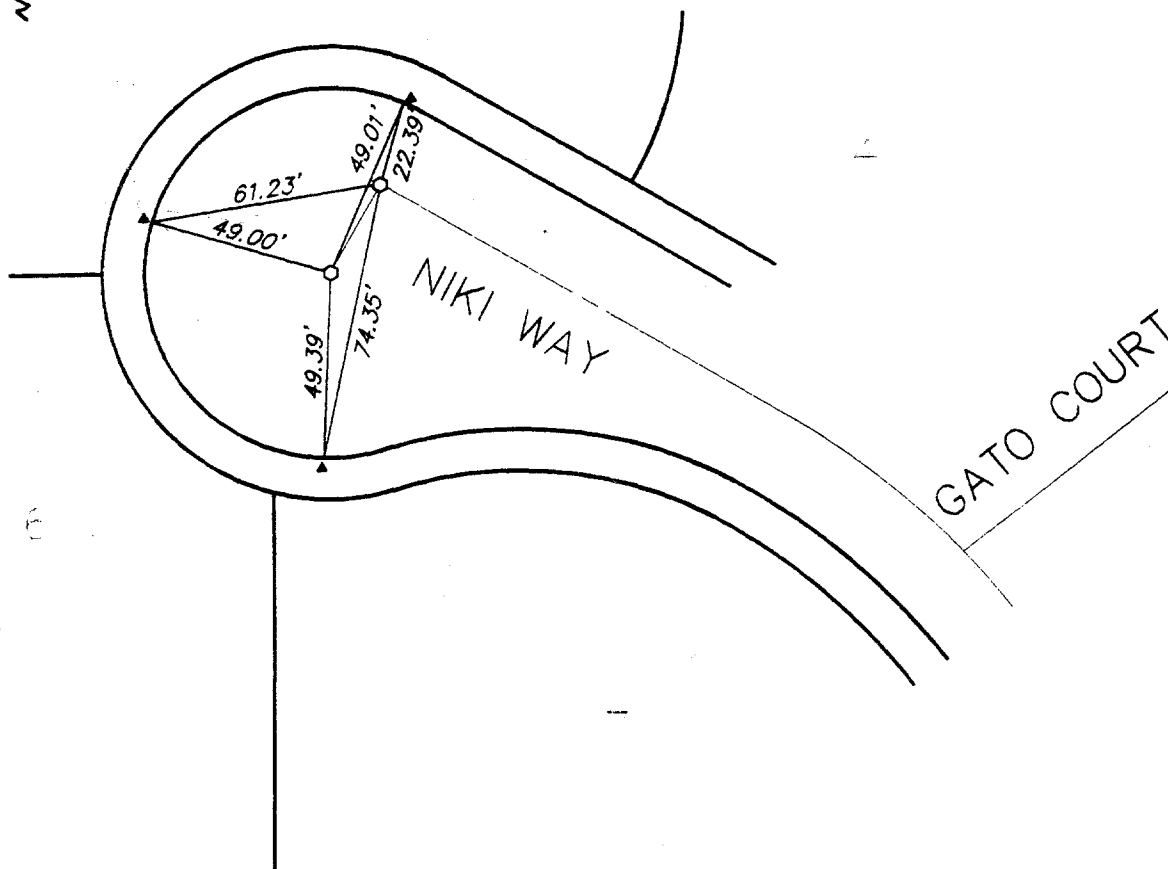


# CENTERLINE TIES TR NO. 21907

NIKI WAY



○ SET 1"IP FLUSH  
WITH RCE 12437 PLUG  
▲ SET L&T AND RCE  
12437 TAG

**JDR**  
CORPORATION

1910 S. ARCHIBALD AVE., STE. N  
ONTARIO, CA 91761  
(909) 930-1466  
FAX (909) 930-1468

PLANNING • CIVIL • SURVEYING

DATE:	SCALE:	SHEET:	JOB NO.
2-20-95	1"=40'		2771

✕ FD. Ramset Nail on T/C  
■ FD. "C" Nail on T/C

● FD. LD. & TK. on T/C  
○ Set LD. & TK. on T/C

Scale:

Date:

Drawn by:

W.O.:

F.B.:

## OFFICIAL TIE PLAT CITY OF RIVERSIDE

*These ties are for the purpose of perpetuating the found monumentation. No claim is made as to the relationship of the points or lines shown hereon to true boundary locations.*

Sheet 1 of 1

File No.:

Street:

NIKI WAY

5972.71F

OFFICIAL USE ONLY

X-Street:

GATO COURT