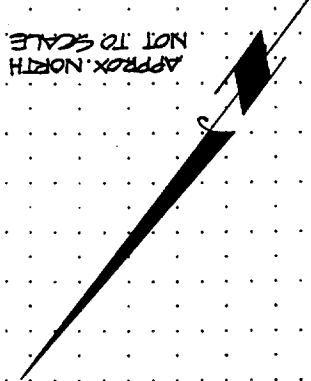


SCALE: N.T.S.  
 DATE: 7-17-92  
 DR. BY: *[Signature]*  
 W.O.:  
 F.B.:

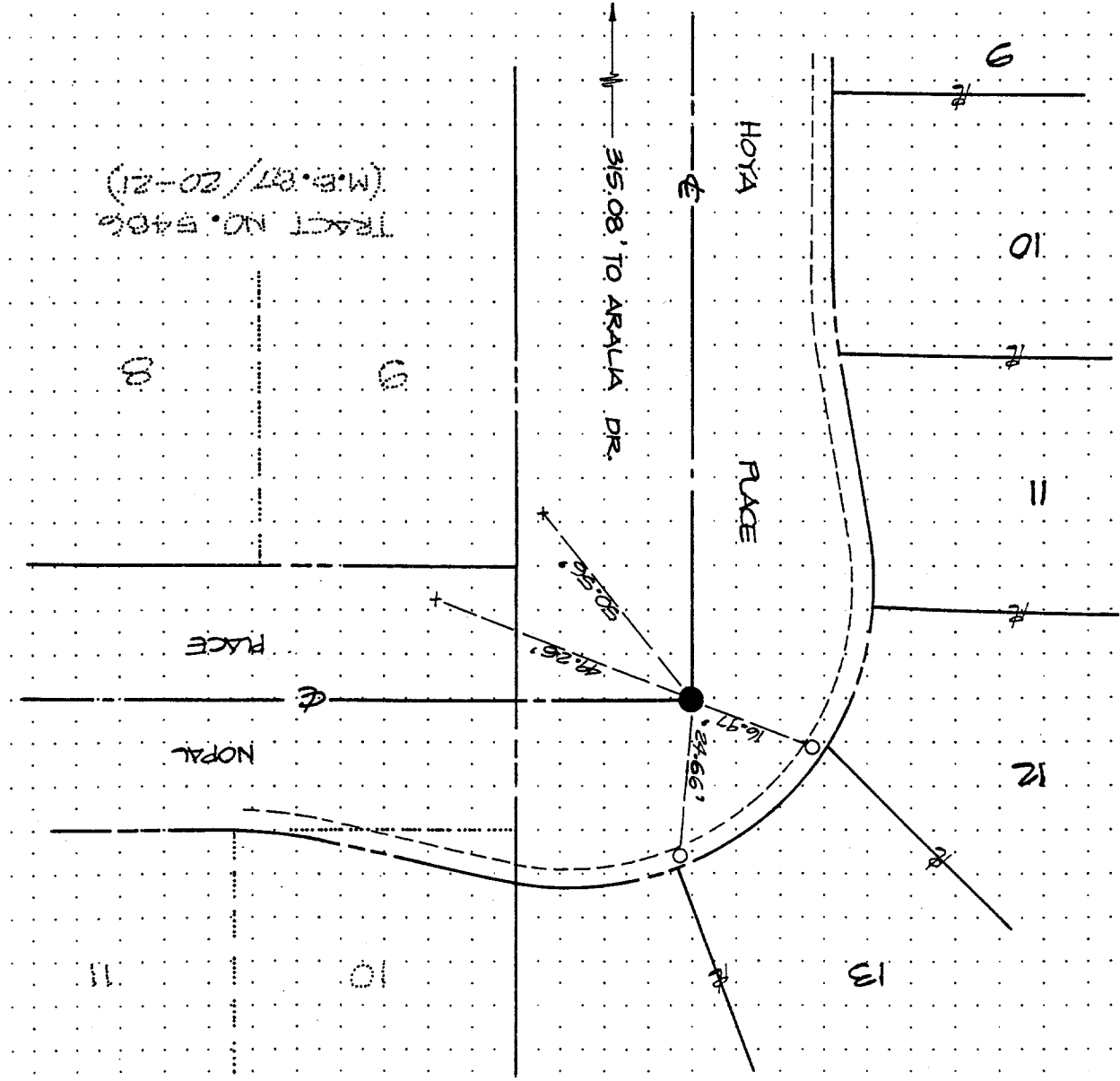
OFFICIAL TIE PLAT  
 CITY OF RIVERSIDE  
 PREPARED BY: FORKERT ENGINEERING & SURVEYING  
 HUNTINGTON BEACH, CA. 92646  
 PHONE (714) 963-6793

SHEET  
 OF SHEETS  
 FILE NO.:

STREET HOYA PL. 5984.TIF  
 X-STREET  
 OFFICE USE ONLY  
 NOPAL PL.



LEGEND:  
 ● 1" I.P. TAGGED R.C.E. 7211.  
 ○ THE POINTS ARE LEAD AND TACK SET IN TOP OF CURB. UNLESS OTHERWISE NOTED.  
 + SET SCRIBED +; SET IN TOP OF CURB, UNLESS OTHERWISE NOTED.  
 --- CURB LINE  
 - - - - - TIE LINE



TRACT NO. 5486  
 (M.B. 87/20-21)

TIES FOR TRACT 8716  
 MAP BOOK 130 PAGE 68