

SWING TIE

HISTORICAL DATA

1. Ader's Subdivision, (Rod)
2. RS 44/11 (SPK)
3. TRACT 2951 (SPK)

CREW:

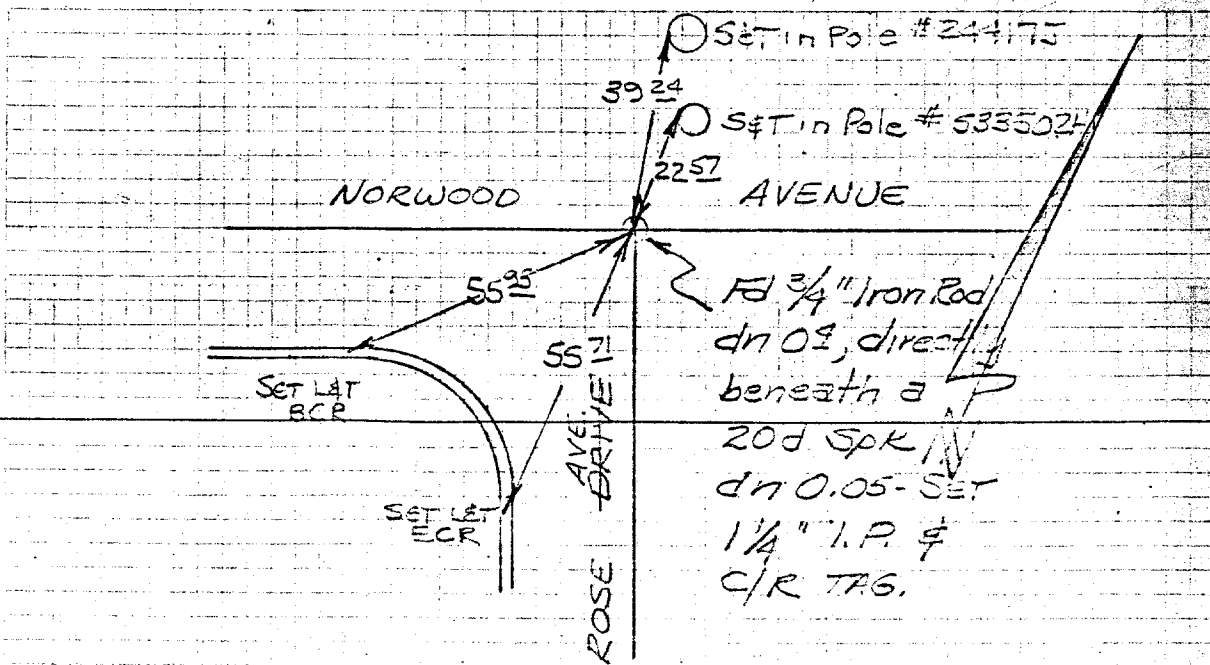
HUTCHINSON  
THOMP

DATE

MAY 21, 1968

Street: Norwood Ave  
6043. TIF

X-Street: ROSE AVE.  
OFFICIAL USE ONLY



FIELD CHECK  
9-68 GPH

628/73

- ✕ FD. Ramset Nail on T/C
- FD. "C" Nail on T/C

- FD. LD. & TK. on T/C
- Set LD. & TK. on T/C

**OFFICIAL TIE PLAT**  
CITY OF RIVERSIDE

*These ties are for the purpose of perpetuating the found monumentation. No claim is made as to the relationship of the points or lines shown hereon to true boundary locations.*

Sheet 1 of 1  
File No.:

Scale:

Date:

Drawn by:

W.O.:

F.B.: