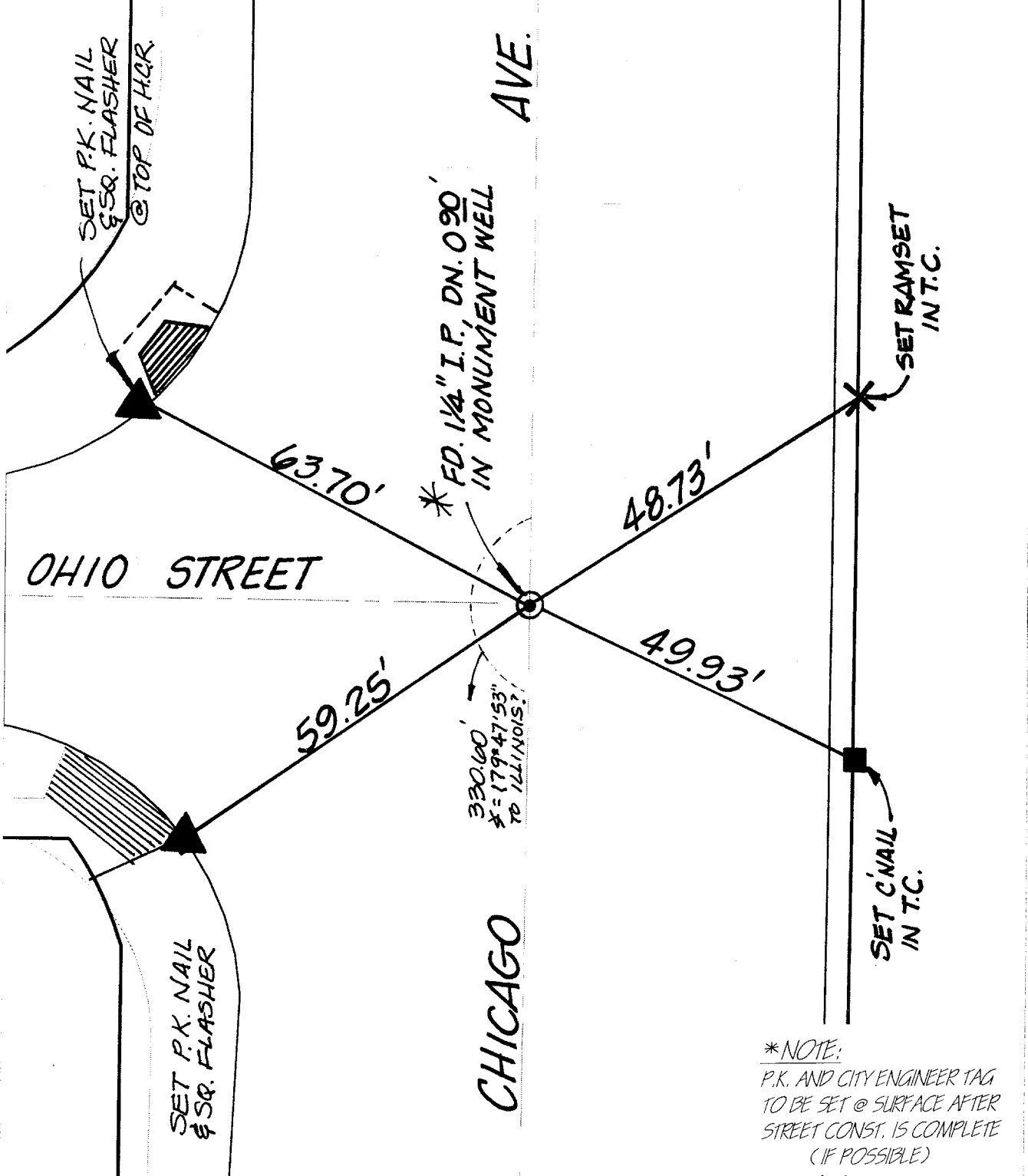


"SWING TIES"



Street: CHICAGO AVE
 6068.TIF
 X-Street: OHIO STREET
 OFFICIAL USE ONLY

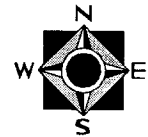
*NOTE:
 P.K. AND CITY ENGINEER TAG
 TO BE SET @ SURFACE AFTER
 STREET CONST. IS COMPLETE
 (IF POSSIBLE)

- ✕ FD. Ramset Nail on T/C
- FD. LD. & TK. on T/C
- FD. "C" Nail on T/C
- Set LD. & TK. on T/C

Scale: 1" = 20'
 Date: 01/24/00
 Drawn by: scurtis
 W.O.:
 F.B.:

OFFICIAL TIE PLAT
 CITY OF RIVERSIDE

*These ties are for the purpose of perpetuating the found
 monumentation. No claim is made as to the relationship of
 the points or lines shown hereon to true boundary locations.*



Sheet 1 of 1
 File No.: