

Street: OLD BRIDGE RD. 6070-TIF OFFICIAL USE ONLY  
 X-Street: SUN BERM DRIVE

TR NO 25390

29

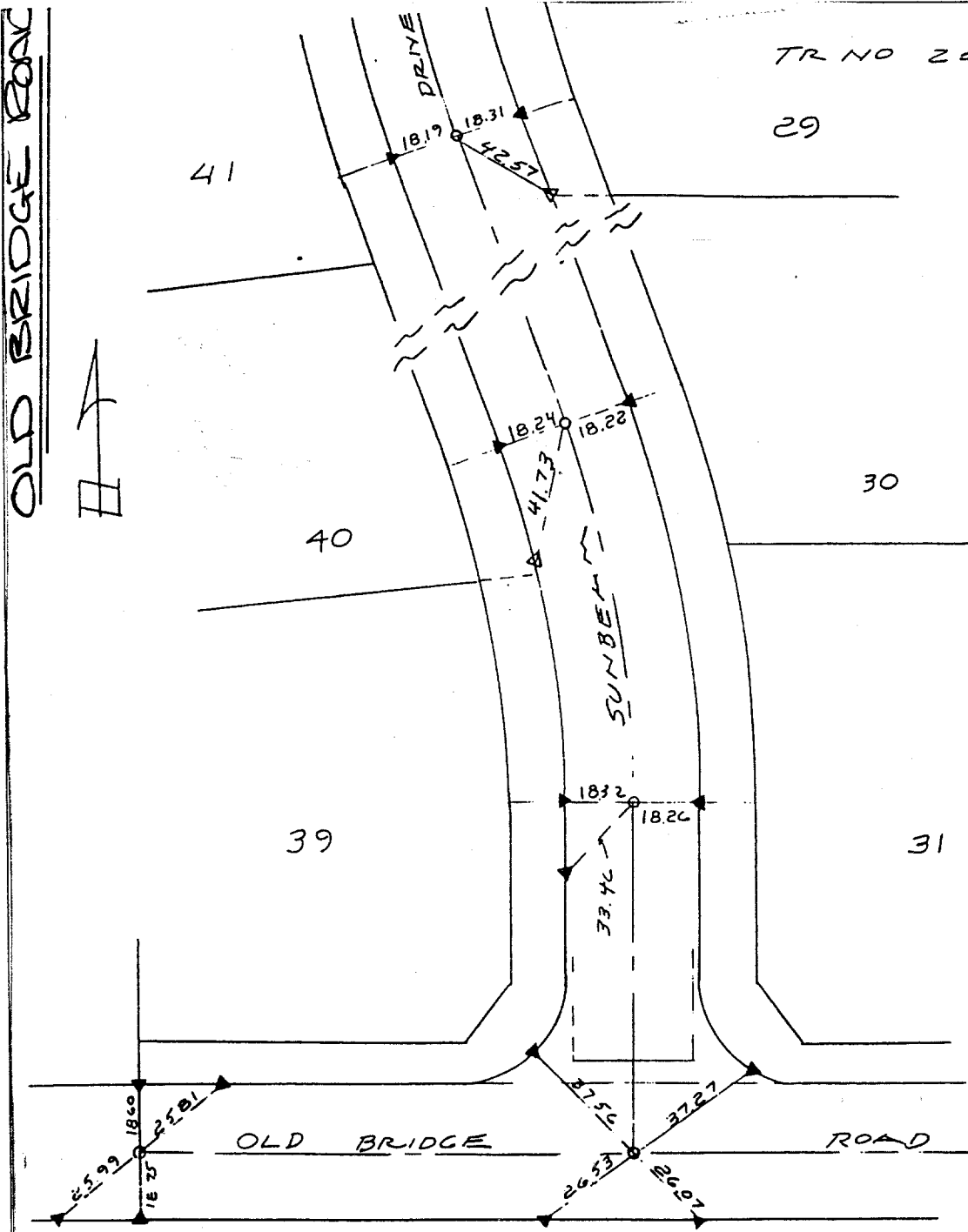
41

30

40

39

31



△ - SET N & TAG LS 5529 ON T.C. & LOT LINE PROJECTED

○ - SET 1" I.P. TAGGED LS 5529

● - FOUND MONUMENT

× FD. Ramset Nail on T/C

● FD. LD. & TK. on T/C

■ FD. "C" Nail on T/C

○ Set LD. & TK. on T/C

Scale: 1" = 40'

Date: 8-6-92

Drawn by: DB

W.O.: 89-301

F.B.: 1053/214

## OFFICIAL TIE PLAT

### CITY OF RIVERSIDE

*These ties are for the purpose of perpetuating the found monumentation. No claim is made as to the relationship of the points or lines shown hereon to true boundary locations.*

TR 25390

Sheet 1 of 6

File No.: