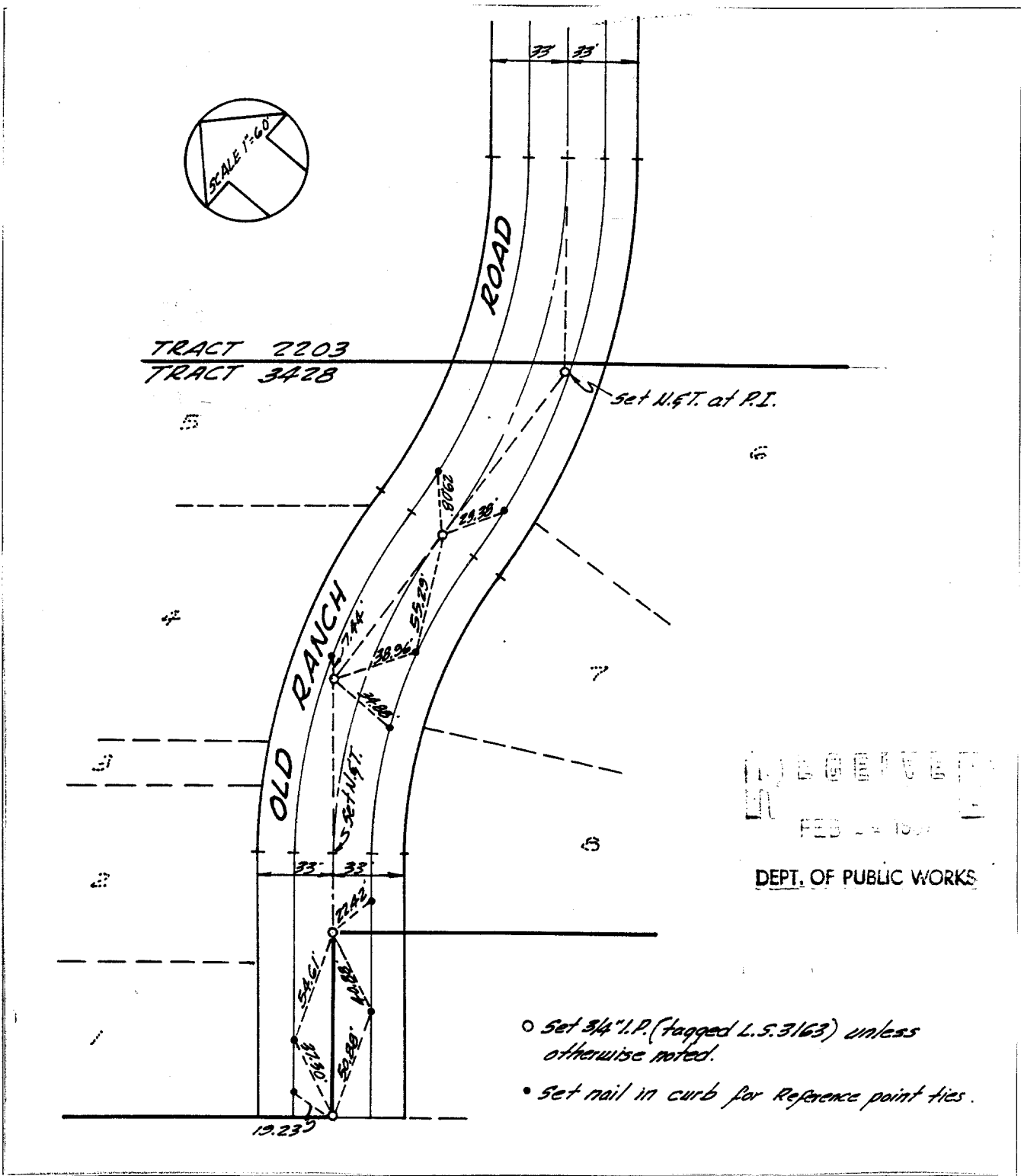


Street: OLD RANCH ROAD
6081 71E

X-Street:
 OFFICIAL USE ONLY



- Set 3/4" I.P. (tagged L.S. 3163) unless otherwise noted.
- Set nail in curb for Reference point ties.

- ✗ FD. Ramset Nail on T/C
- FD. LD. & TK. on T/C
- FD. "C" Nail on T/C
- Set LD. & TK. on T/C

Scale:
 Date:
 Drawn by:
 W.O.:
 F.B.:

OFFICIAL TIE PLAT
CITY OF RIVERSIDE

These ties are for the purpose of perpetuating the found monumentation. No claim is made as to the relationship of the points or lines shown hereon to true boundary locations.

TRACT 3428

Sheet 1 of 1
 File No.: