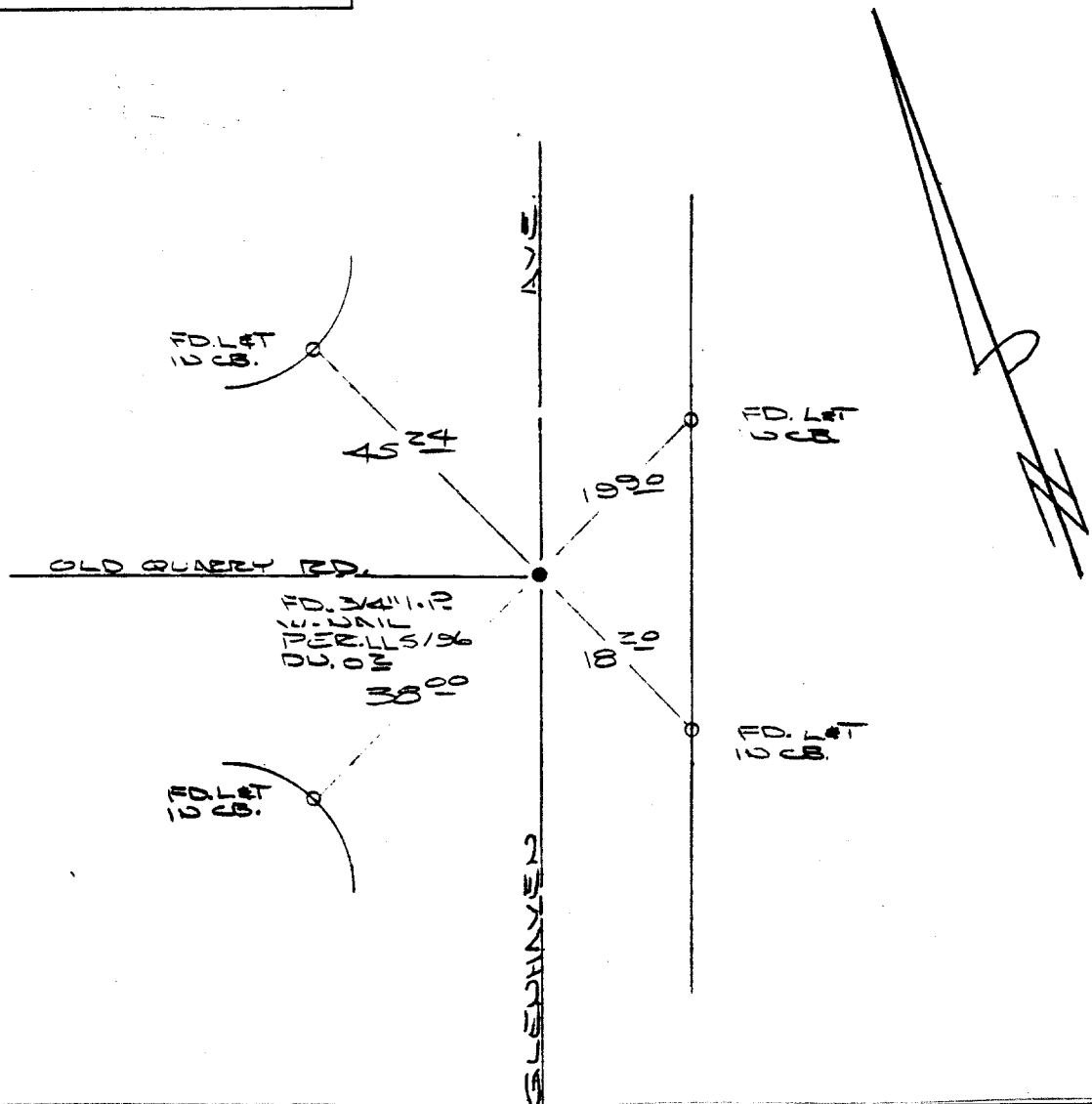


Street: OLD QUARRY RD. 6083 TIF X-Street: GLENHAVEN AVE  
 OFFICIAL USE ONLY

**HISTORICAL DATA**  
 MB. 33/15  
 LLS/96

**TRANSIT TIES**



- ✕ FD. Ramset Nail on T/C
- FD. LD. & TK. on T/C
- FD. "C" Nail on T/C
- Set LD. & TK. on T/C

Scale:  
 Date: JUNE 17, 1985  
 Drawn by:  
 W.O.:  
 F.B.:

**OFFICIAL TIE PLAT**  
**CITY OF RIVERSIDE**

*These ties are for the purpose of perpetuating the found monumentation. No claim is made as to the relationship of the points or lines shown hereon to true boundary locations.*

Sheet 1 of 1  
 File No.: