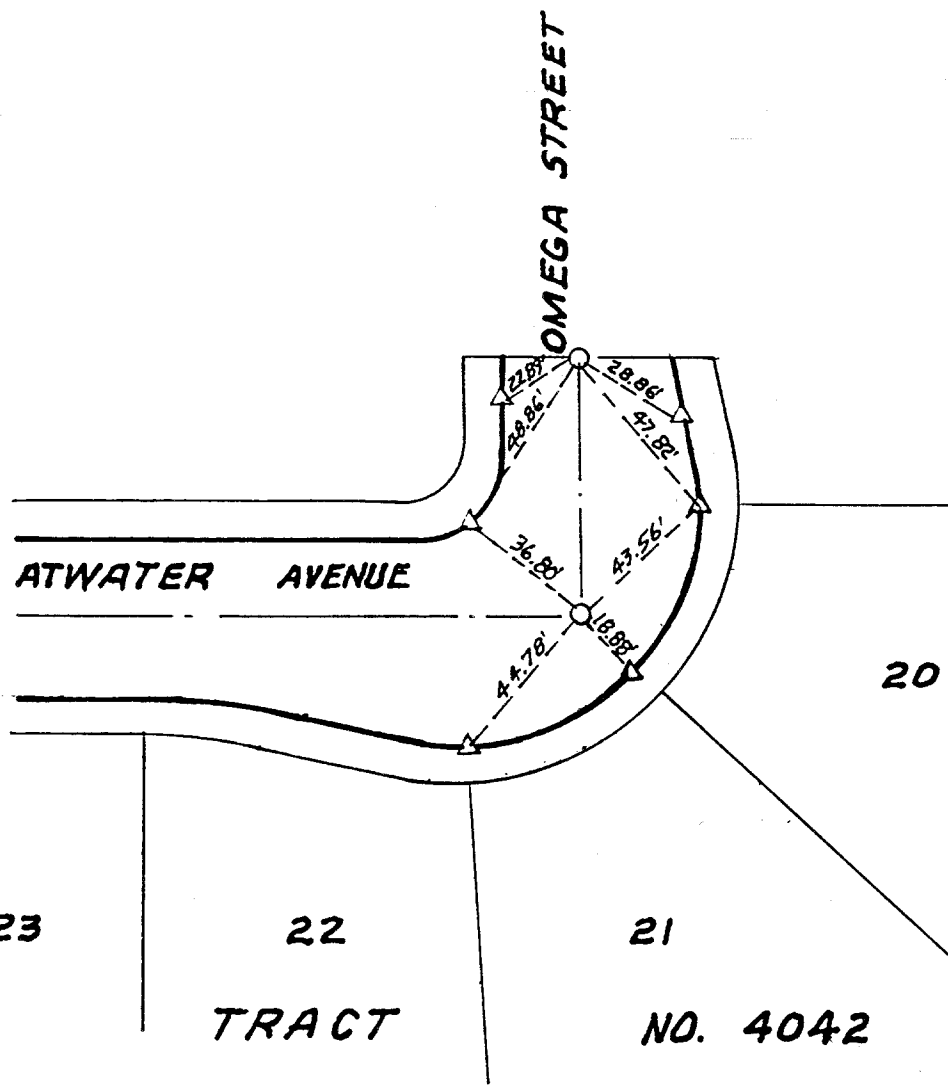


6090.71F

OMEGA ST @ ATWATER AVE



- SET 1/4" I.P. RE 9876
- △ SET STUD & RE 9876 TAG ON T.C.

SCALE: 1" = 50'
 DATE: DEC. 1995
 DR. BY: BEL CK. BY:
 W.O. 70-34
 F.B.: 1014

OFFICIAL TIE PLAT
CITY OF RIVERSIDE
 ALBERT A. WEBB ASSOCIATES
 CONSULTING ENGINEERS
 RIVERSIDE, CALIFORNIA

SHEET
 3
 OF 3 SHEETS
 FILE NO.