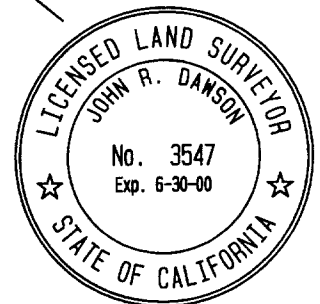
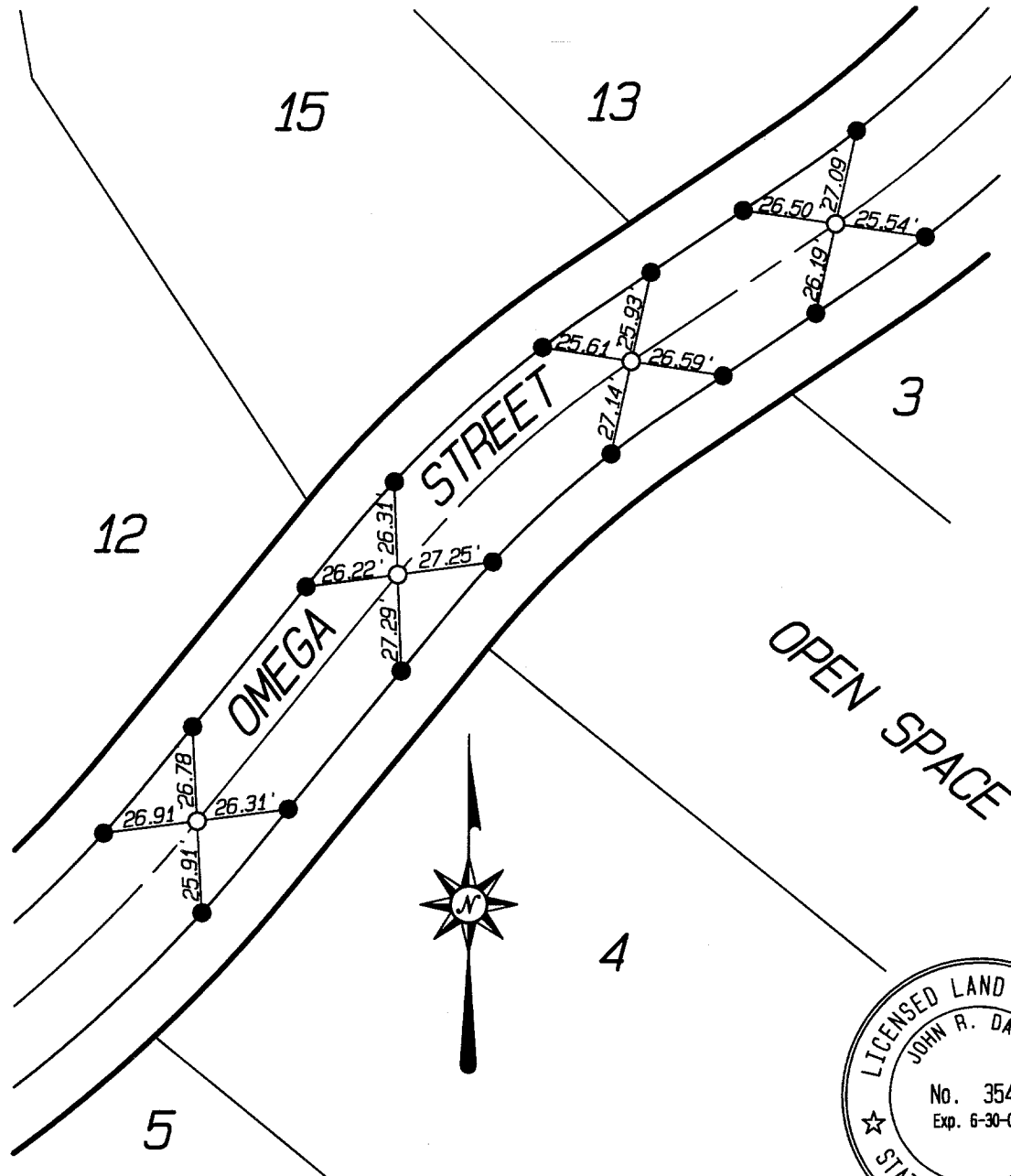


1096.71F

STREET OMEGA STREET X-STREET SOUTH OF RANSOM ROAD OFFICE USE ONLY

- INDICATES SET 8" BOAT SPIKE AND L.S. 3547 TAG FLUSH UNLESS OTHERWISE NOTED
 - INDICATES SET NAIL IN TOP OF CURB
 - ⊙ INDICATES SET NAIL AND L.S. 3547 TAG IN CURB ON LOT LINE PROJECTED UNLESS OTHERWISE NOTED
- NOTE: ALL TIES ARE TRANSIT TIES UNLESS OTHERWISE NOTED



SCALE:	1" = 50'
DATE:	1/5/2000
DR. BY:	SRD
W.O.:	128.08
F.B.:	1

OFFICIAL TIE PLAT
CITY OF RIVERSIDE

PREPARED BY:



INTEGRA ENGINEERING, INC.
 LAND SURVEYORS * CIVIL ENGINEERS
 621 E. CARNEGIE DRIVE, #120, SAN BERNARDINO, CA. 92408
 TELEPHONE (909) 383-0200 FAX (909) 383-0203

SHEET 5

OF 13 SHEETS
 FILE No.: