

**HISTORICAL DATA**

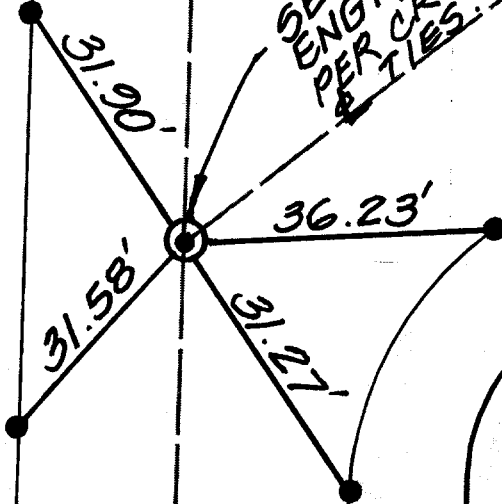
CRFB 660/62  
M.B. 32/60-61

"SWING TIES"

AVE.

BRUCE  
AVE.

SET P.K. & CITY  
ENG'R. TAG. FLUSH  
PER CRFB 660/62  
& TILES.



ADAIR

Street:

BRUCE AVE

X-Street:  
OFFICIAL USE ONLY

ADAIR AVE

61.71F

- × FD. Ramset Nail on T/C
- FD. "C" Nail on T/C

- FD. LD. & TK. on T/C
- Set LD. & TK. on T/C

Scale: 1" = 20'

Date: 05/13/99

Drawn by: KGE

W.O.:

F.B.:

# OFFICIAL TIE PLAT

CITY OF RIVERSIDE

*These ties are for the purpose of perpetuating the found monumentation. No claim is made as to the relationship of the points or lines shown hereon to true boundary locations.*



Sheet 1 of 1

File No.: