

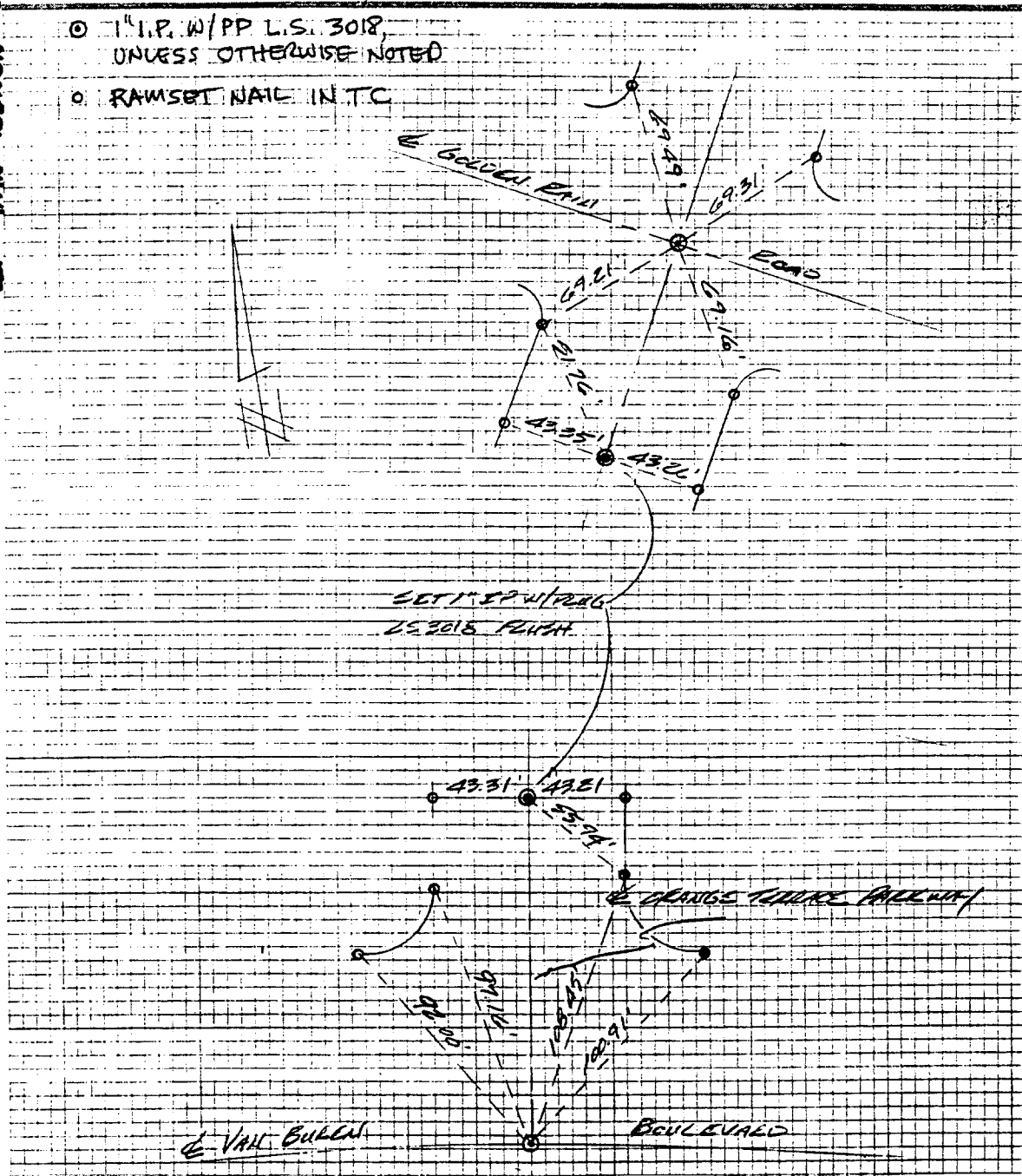
J.F. Davidson Associates, Inc.  
ENGINEERING PLANNING SURVEYING  
ARCHITECTURE LANDSCAPE ARCHITECTURE

F.B. 10058/448

SURVEY OF ETIES ORANGE TERRACE PARKWAY SHEET 4 OF 5 SHEETS  
FOR \_\_\_\_\_ W.O. No. \_\_\_\_\_ Date 8-17-90  
SURVEY PARTY Richard Tenney REF. \_\_\_\_\_ AM. \_\_\_\_\_

ORANGE TERRACE PARKWAY  
OF VAN BUREN BLVD  
CITY OF RIVERSIDE

- 1" I.P. W/PP L.S. 3018, UNLESS OTHERWISE NOTED
- RAMSBET NAIL IN T/C



- × FD. Ramset Nail on T/C
- FD. LD. & TK. on T/C
- FD. "C" Nail on T/C
- Set LD. & TK. on T/C

Scale:  
Date: 8-17-90  
Drawn by:  
W.O.:  
F.B.: 10058/448

## OFFICIAL TIE PLAT CITY OF RIVERSIDE

These ties are for the purpose of perpetuating the found  
monumentation. No claim is made as to the relationship of  
the points or lines shown hereon to true boundary locations.

Sheet 4 of 5  
File No.:

Street: ORANGE TERRACE PARKWAY X-Street: GOLDEN RAIN RD.  
OFFICIAL USE ONLY

6107. TIF