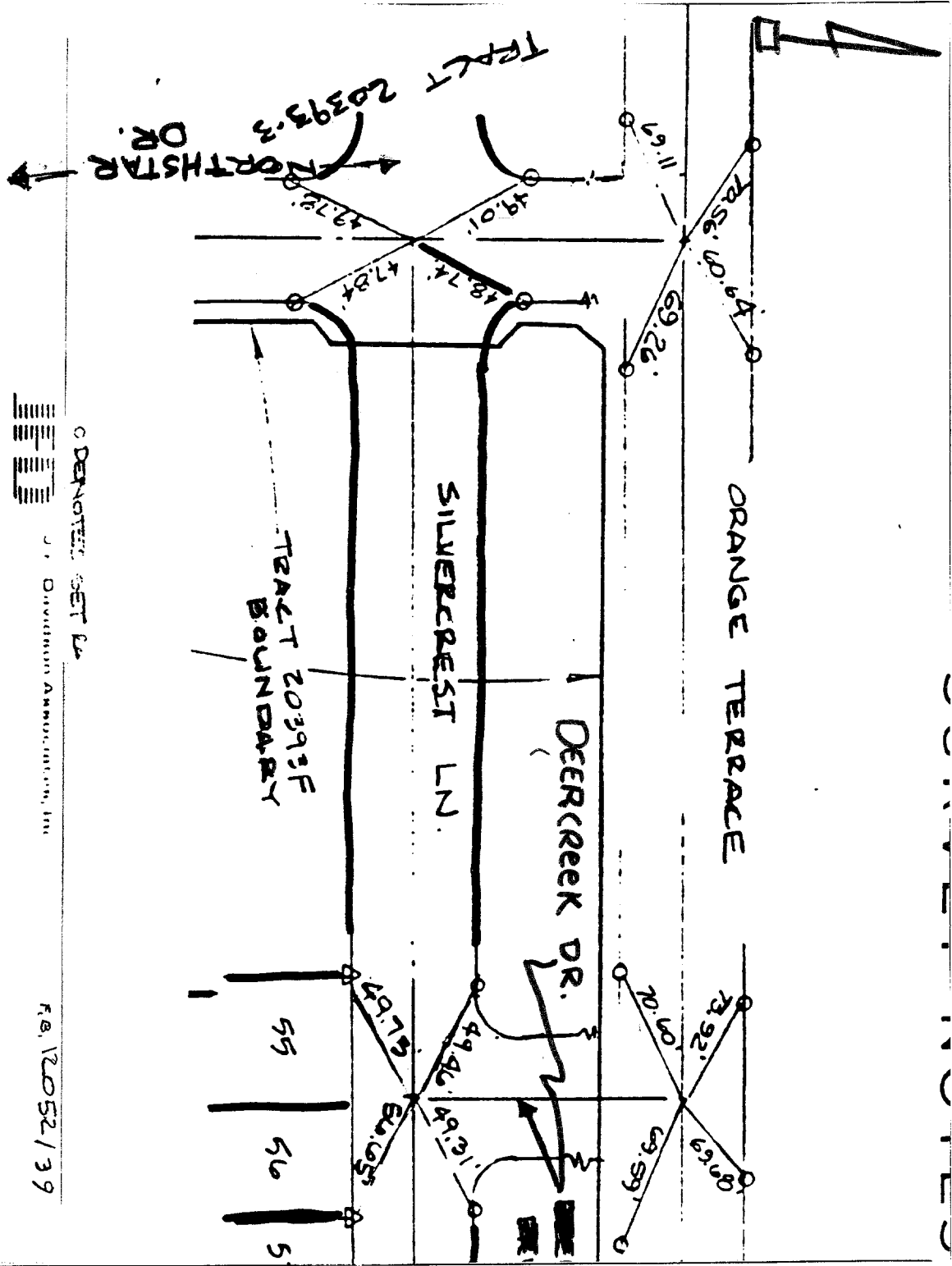


6116.71F

Street: ORANGE TERRACE PKWY X-Street: SILVERCREST LN.

OFFICIAL USE ONLY



DRAWN FOR: **ETIENS FOR TR 20393-3**
 BY: **VAN DEELE CIVIL ENGINEERING**
 1000 W. MAIN ST. RIVERSIDE, CA 92501

WO NO: **90-12052**
 REF:

Date: **10-3-90**
 A.M.

26 77 8.4
 26 99.61 (M)
 20 29

C DENOTES SET LN.
 OF Davidson Associates, Inc.
 FA 12052/39

- ✕ FD. Ramset Nail on T/C
- FD. LD. & TK. on T/C
- FD. "C" Nail on T/C
- Set LD. & TK. on T/C

Scale:
 Date:
 Drawn by:
 W.O.:
 F.B.:

OFFICIAL TIE PLAT

CITY OF RIVERSIDE

These ties are for the purpose of perpetuating the found monumentation. No claim is made as to the relationship of the points or lines shown hereon to true boundary locations.

Sheet 1 of 1
 File No.: