

Scale: _____
 Date: _____
 Drawn by: _____
 W.O.: _____
 F.B.: _____

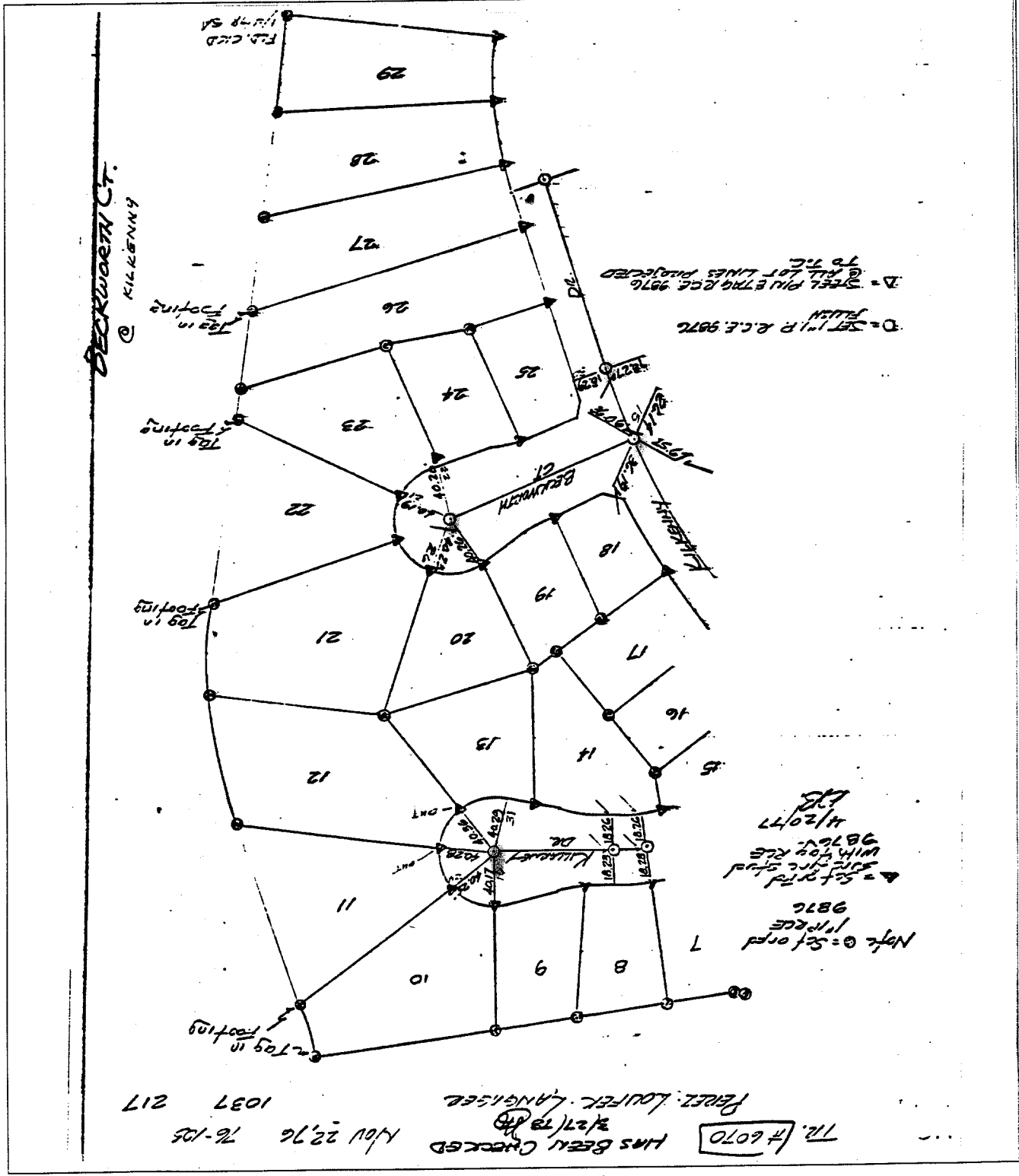
OFFICIAL TIE PLAT

CITY OF RIVERSIDE

Sheet 1 of 1
 File No.: _____

These ties are for the purpose of perpetuating the found monumentation. No claim is made as to the relationship of the points or lines shown hereon to true boundary locations.

× FD. Ramset Nail on T/C
 ● FD. LD. & TK. on T/C
 ○ Set LD. & TK. on T/C
 ■ FD. "C" Nail on T/C



TIE #6070
 HAS BEEN CHECKED
 2/27/78
 PEREZ, LOUISE LANGRISSE
 NOV 22, 76 76-105 1037 217

Note: Set on 1/1/76
 9876
 4/20/77
 9876
 WITH 1/2\"/>

D = SET 1/4\"/>

Street: **BECKWIRTH CT** X-Street: **KILKENNY**
 6/6.71F OFFICIAL USE ONLY