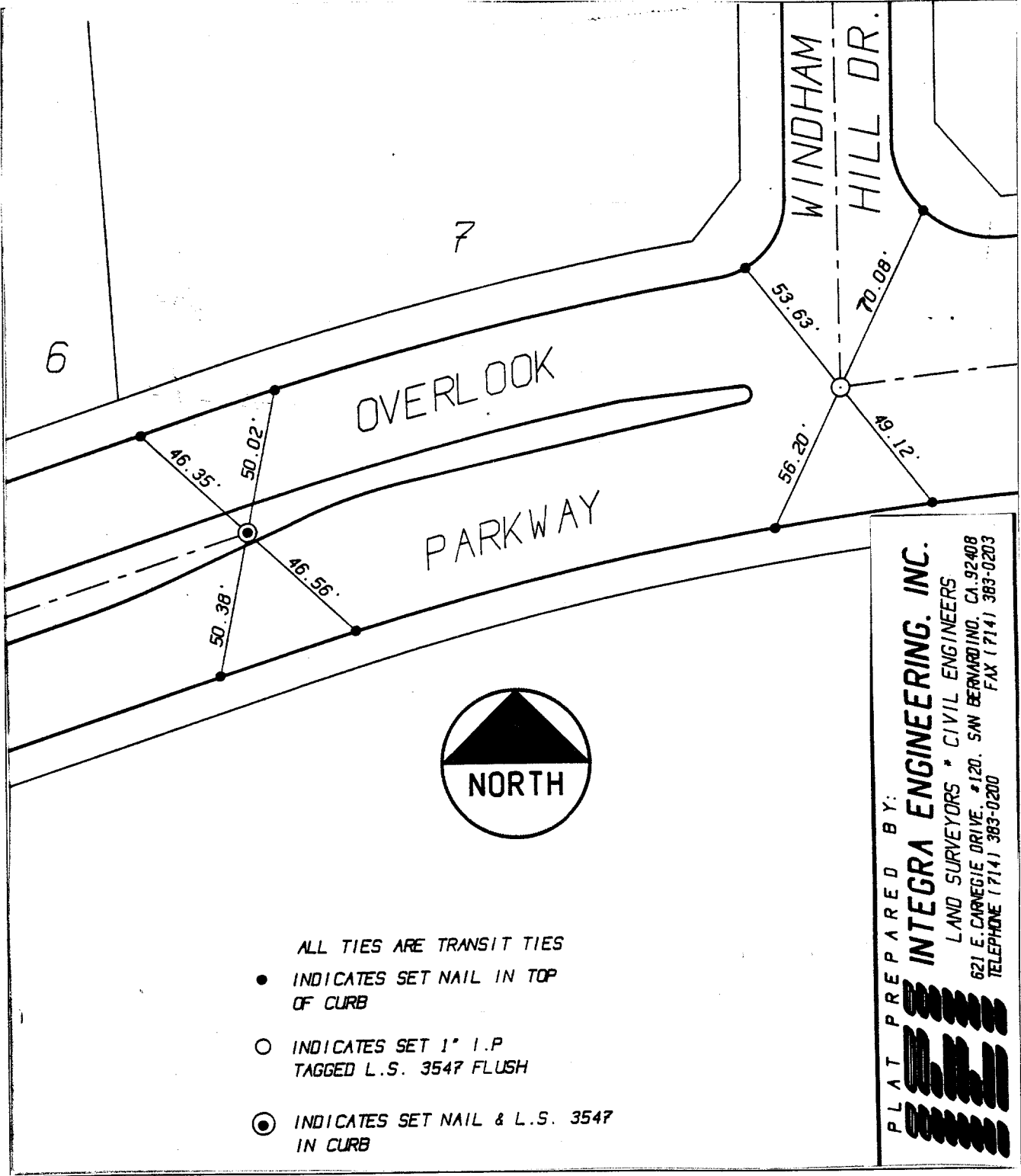


6199 TIF

Street: OVERLOOK PKWY

OFFICIAL USE ONLY

X-Street: WINDHAM HILL DR.



- ALL TIES ARE TRANSIT TIES
- INDICATES SET NAIL IN TOP OF CURB
 - INDICATES SET 1" I.P. TAGGED L.S. 3547 FLUSH
 - ⊙ INDICATES SET NAIL & L.S. 3547 IN CURB

PLAT PREPARED BY:
INTEGRA ENGINEERING, INC.
 LAND SURVEYORS * CIVIL ENGINEERS
 621 E. CARNEGIE DRIVE, #120, SAN BERNARDINO, CA. 92408
 TELEPHONE (714) 383-0200 FAX (714) 383-0203

- ✕ FD. Ramset Nail on T/C
- FD. "C" Nail on T/C
- FD. LD. & TK. on T/C
- Set LD. & TK. on T/C

Scale: _____
 Date: _____
 Drawn by: _____
 W.O.: _____
 F.B.: _____

OFFICIAL TIE PLAT
CITY OF RIVERSIDE

These ties are for the purpose of perpetuating the found monumentation. No claim is made as to the relationship of the points or lines shown hereon to true boundary locations.

TRACT 21188

Sheet **3** of **5**
File No.: