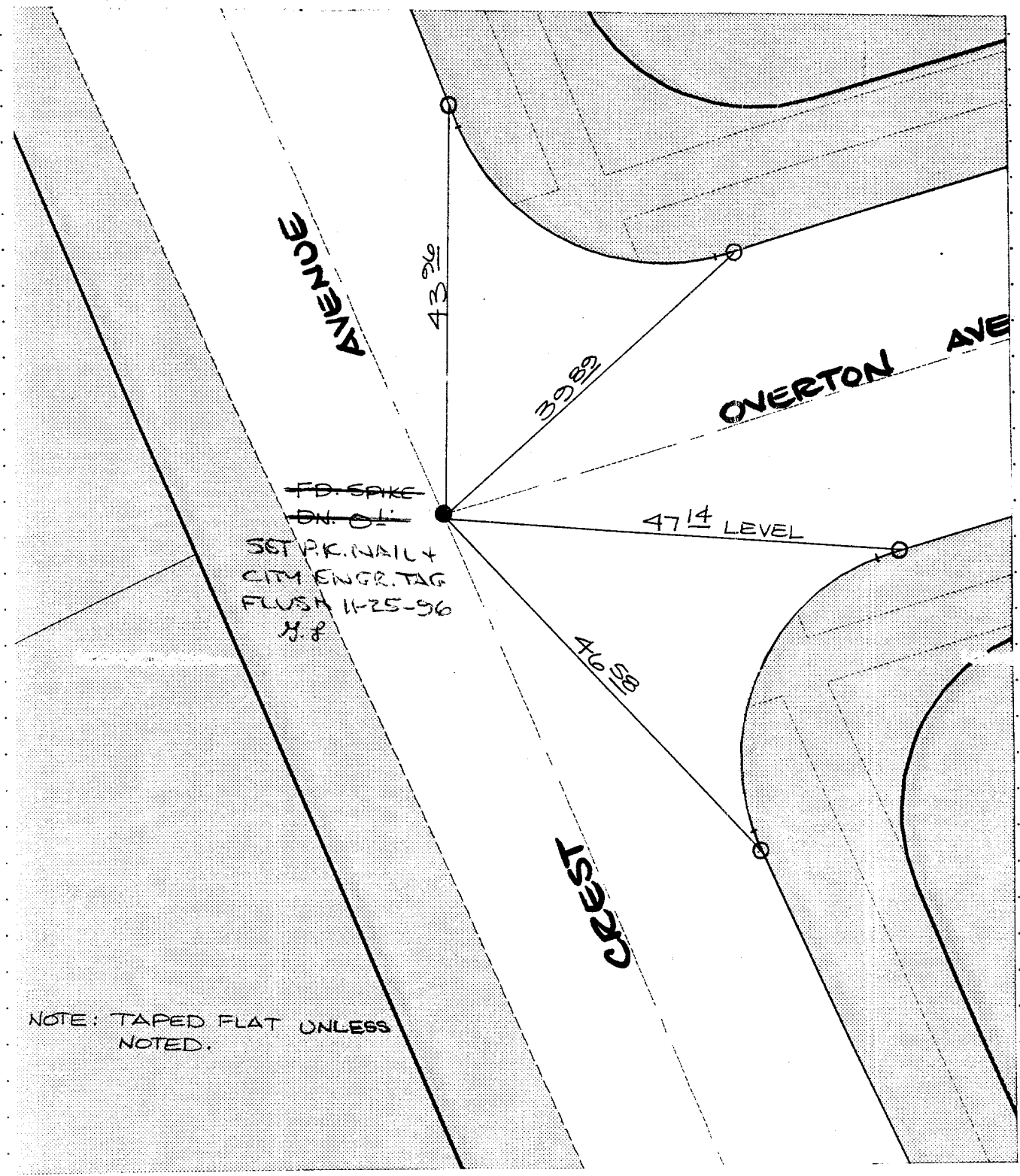


STREET CREST AVENUE X-STREET OVERTON AVENUE

OFFICE USE ONLY

6206. TIF



NOTE: TAPED FLAT UNLESS NOTED.

- ✕ FD. Ramset Nail on T/C
- FD. LD. & TK. on T/C
- FD. "C" Nail on T/C
- SET LD. & TK. On T/C APPROX. 12" FROM RESPECTIVE BCR/ECR

SCALE: N/A
DATE: 6/12/96
DR. BY: [Signature]
W.O.:
F.B.:

OFFICIAL TIE PLAT
CITY OF RIVERSIDE

These ties are for the purpose of perpetuating the found monumentation. No claim is made as to the relationship of the points or lines shown hereon to true boundary locations.

SHEET
OF SHEETS
FILE NO.: