

RECOVERY NOTES

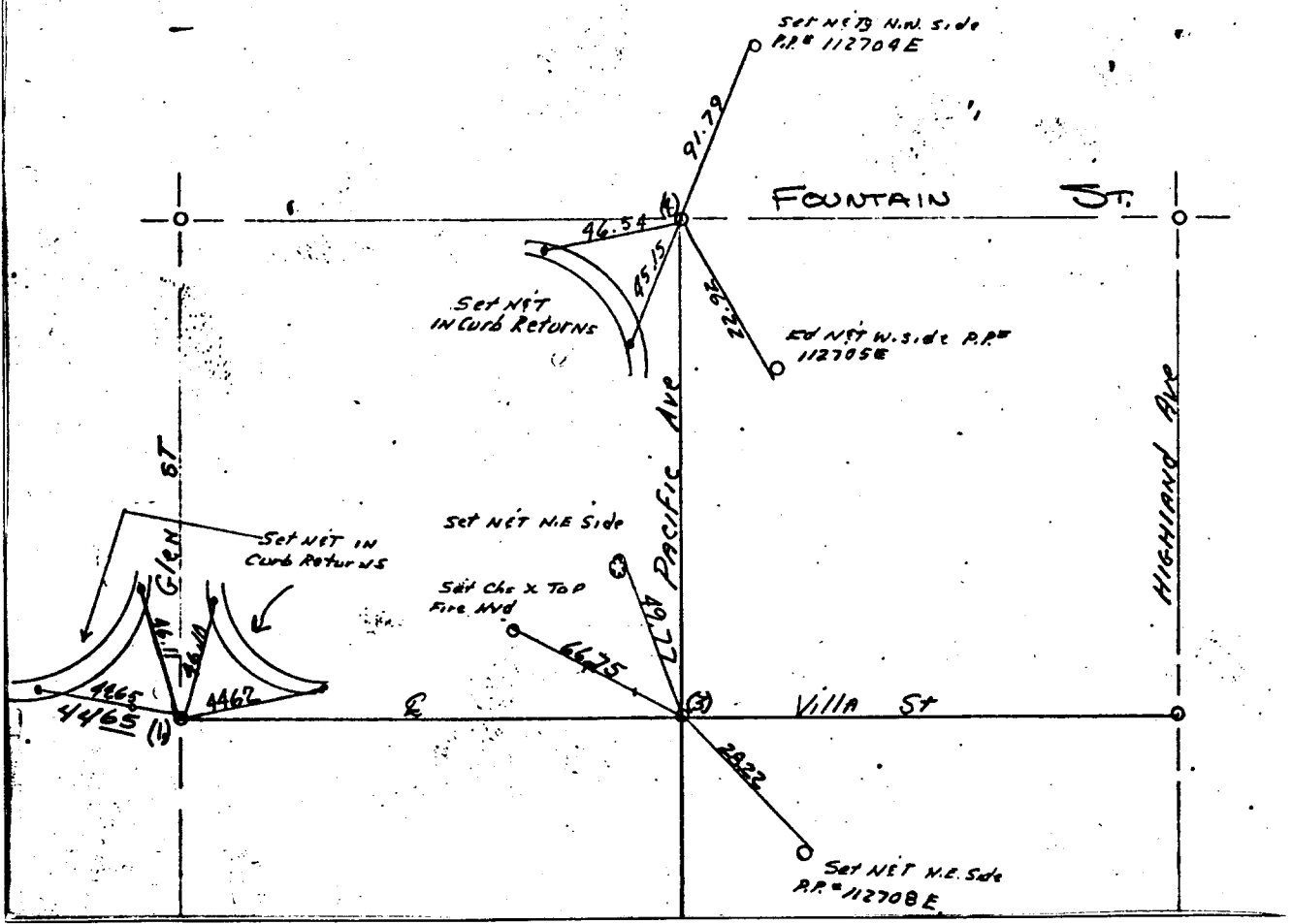
T.B 34/34 BT 34

SEC. 7 TWP. 2 South RGE. 4 west TB 34
 Date 11-12-73 Temp 70° WO# 68-8407
 Party Shcp, Conser, Wiltz, MARTINEZ Origination Riv. Co. SUR.

REFERENCES & NOTES

- (1) Fd 1/2" I.P. I.D. ON 2" 6"x Ties. Inter. of Villa St & Glen St.
- (2) Fd 1/2" I.P. I.D. Flush No TAG Inter Pacific Ave & Villa St
- (3) Fd 1/2" I.P. I.D. ON 0" ID with "X" Ties. For Inter. of Pacific St & Fountain St

TB 34/34



- ✗ FD. Ramset Nail on T/C
- FD. LD. & TK. on T/C
- FD. "C" Nail on T/C
- Set LD. & TK. on T/C

Scale:
 Date:
 Drawn by:
 W.O.:
 F.B.:

OFFICIAL TIE PLAT
CITY OF RIVERSIDE
 These ties are for the purpose of perpetuating the found monumentation. No claim is made as to the relationship of the points or lines shown hereon to true boundary locations.

Sheet 1 of 1
 File No.:

Street: PACIFIC
 X-Street: FOUNTAIN & VILLA ST.
 OFFICIAL USE ONLY

6277. TIF