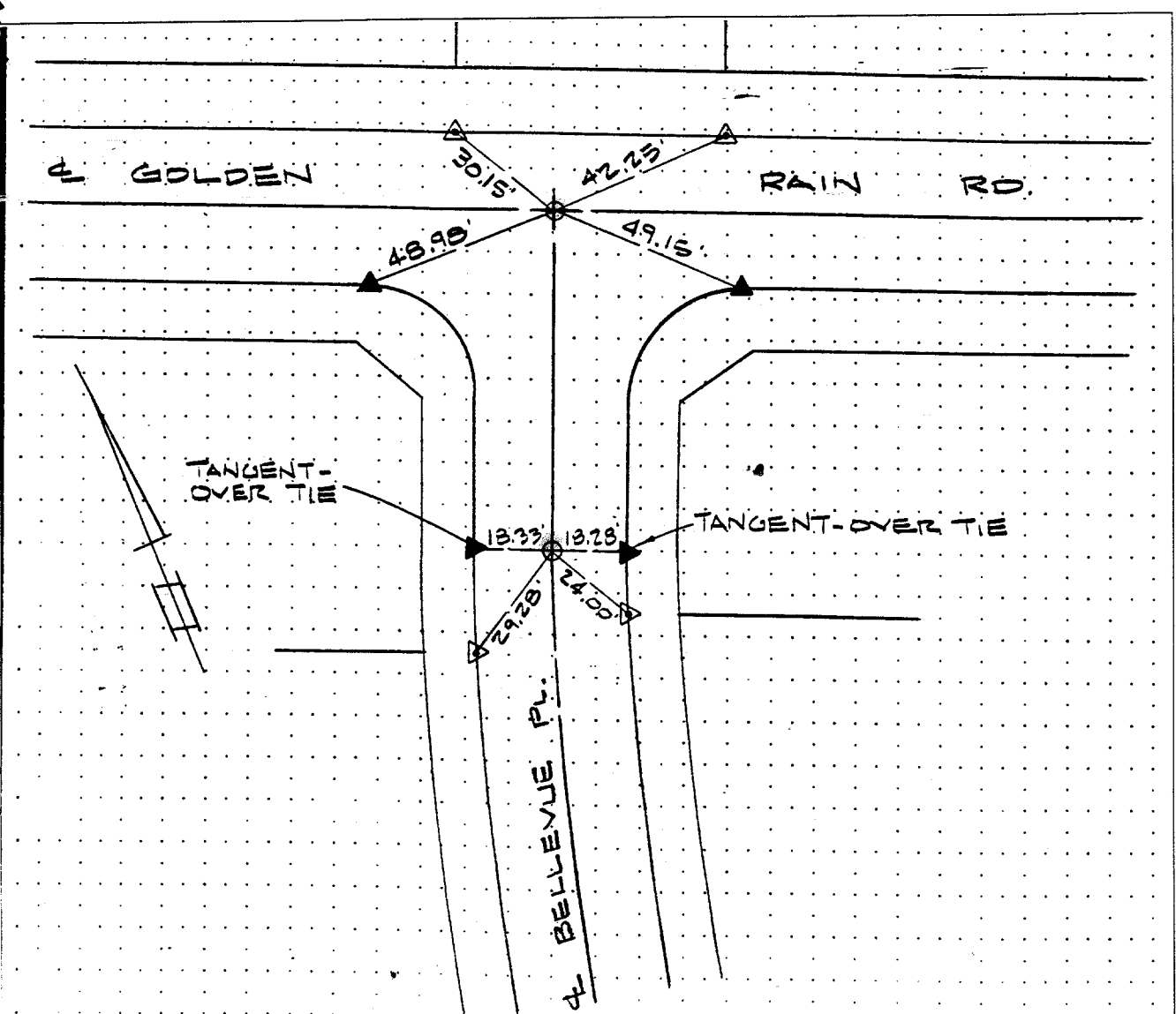


117.033
630.71F

Street: BELLEVUE PL.
630.71F
X-Street: GOLDEN RAIN RD
OFFICIAL USE ONLY



NOTES:

- O-SET 1" I.P. W/L 3018 PLUG FLUSH
- ▲-SET RAMSET NAIL ON TOP OF CURB
- △-FD. NAIL W/L 3018 TAG ON TOP OF CURB

RECEIVED
NOV 20 1995
DEPT. OF PUBLIC WORKS

TRACT 22653-1

- × FD. Ramset Nail on T/C
- FD. LD. & TK. on T/C
- FD. "C" Nail on T/C
- Set LD. & TK. on T/C

Scale:
Date:
Drawn by:
W.O.:
F.B.:

OFFICIAL TIE PLAT
CITY OF RIVERSIDE

These ties are for the purpose of perpetuating the found monumentation. No claim is made as to the relationship of the points or lines shown hereon to true boundary locations.

Sheet 1 of 10
File No.: