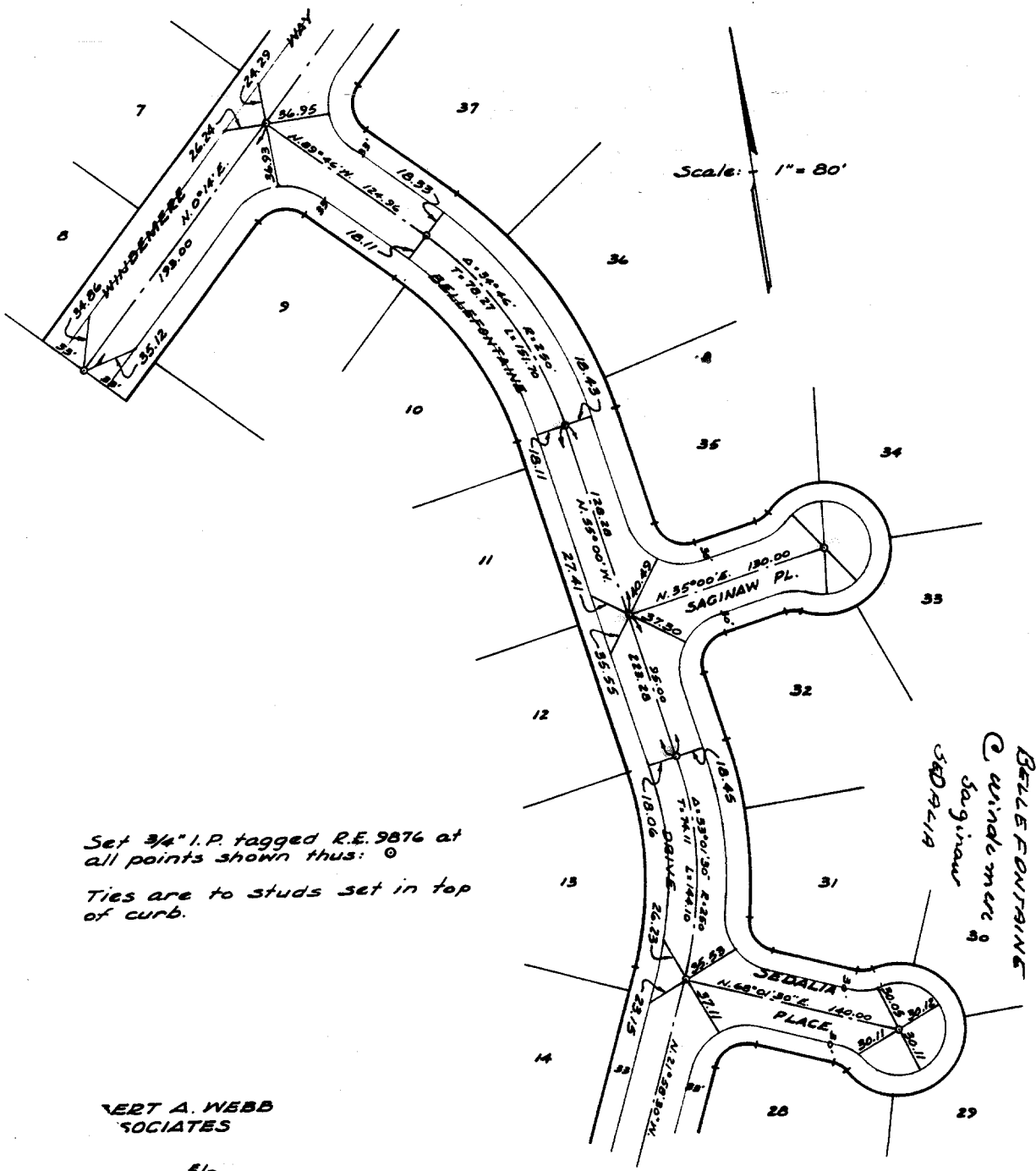


633.71F

Being a subdivision of a portion of the N.W. 1/4 of Sec. 6, T.35, R.4W, S.B.B. & M.



Set 3/4" I.P. tagged R.E. 9876 at all points shown thus:  $\odot$   
 Ties are to studs set in top of curb.

VERT A. WEBB  
 ASSOCIATES

4' 50  
 29 June 65  
 549 W.O. 63-268

Sheet 2 of 3

- $\times$  FD. Ramset Nail on T/C
- $\bullet$  FD. LD. & TK. on T/C
- $\blacksquare$  FD. "C" Nail on T/C
- $\circ$  Set LD. & TK. on T/C

Street: SAGINAW PL.  
633.71F  
 X-Street: BELLEFONTAINE DR.  
 OFFICIAL USE ONLY

Scale:  
 Date:  
 Drawn by:  
 W.O.:  
 F.B.:

**OFFICIAL TIE PLAT**  
**CITY OF RIVERSIDE**

These ties are for the purpose of perpetuating the found monumentation. No claim is made as to the relationship of the points or lines shown hereon to true boundary locations.

TRACT 2776  
 Sheet 2 of 3  
 File No.: