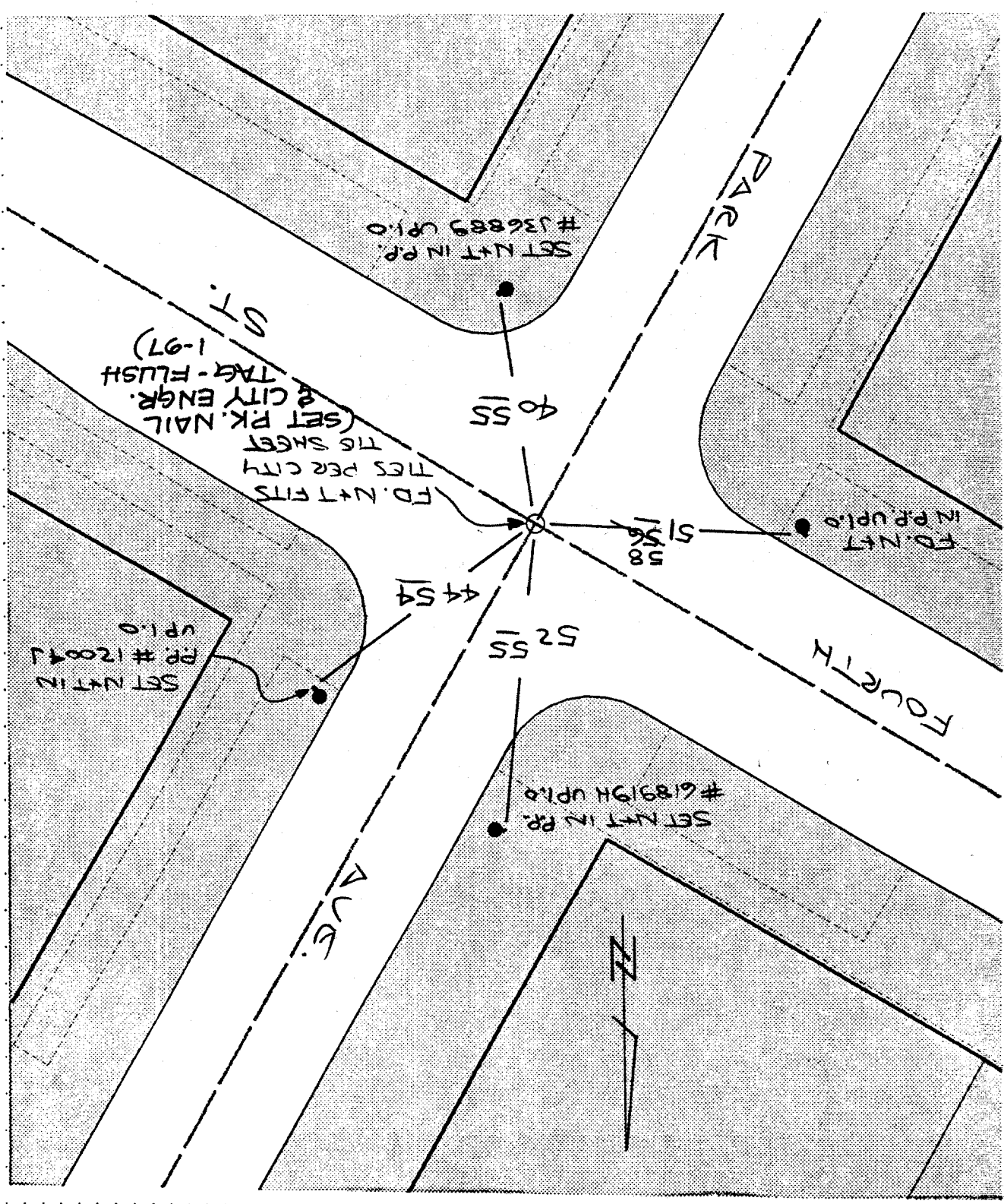


SCALE: U.T.S.	DATE: 10-30-96	DR. BY: LOPCZ	W.O.:	F.B.:
OFFICIAL TIE PLAT CITY OF RIVERSIDE				
These ties are for the purpose of perpetuating the found monumentation. No claim is made as to the relationship of the points or lines shown hereon to true boundary locations.				
SHEET 1	OF 1 SHEETS	FILE NO.:		

STREET PARK AVE. 6330.TIF OFFICE USE ONLY X-STREET FOURTH ST.

X FD. Ramset Nail on T/C
 ■ FD. "C" Nail on T/C
 ● FD. LD. & TK. on T/C
 ○ SET LD. & TK. On T/C



SWING TIES