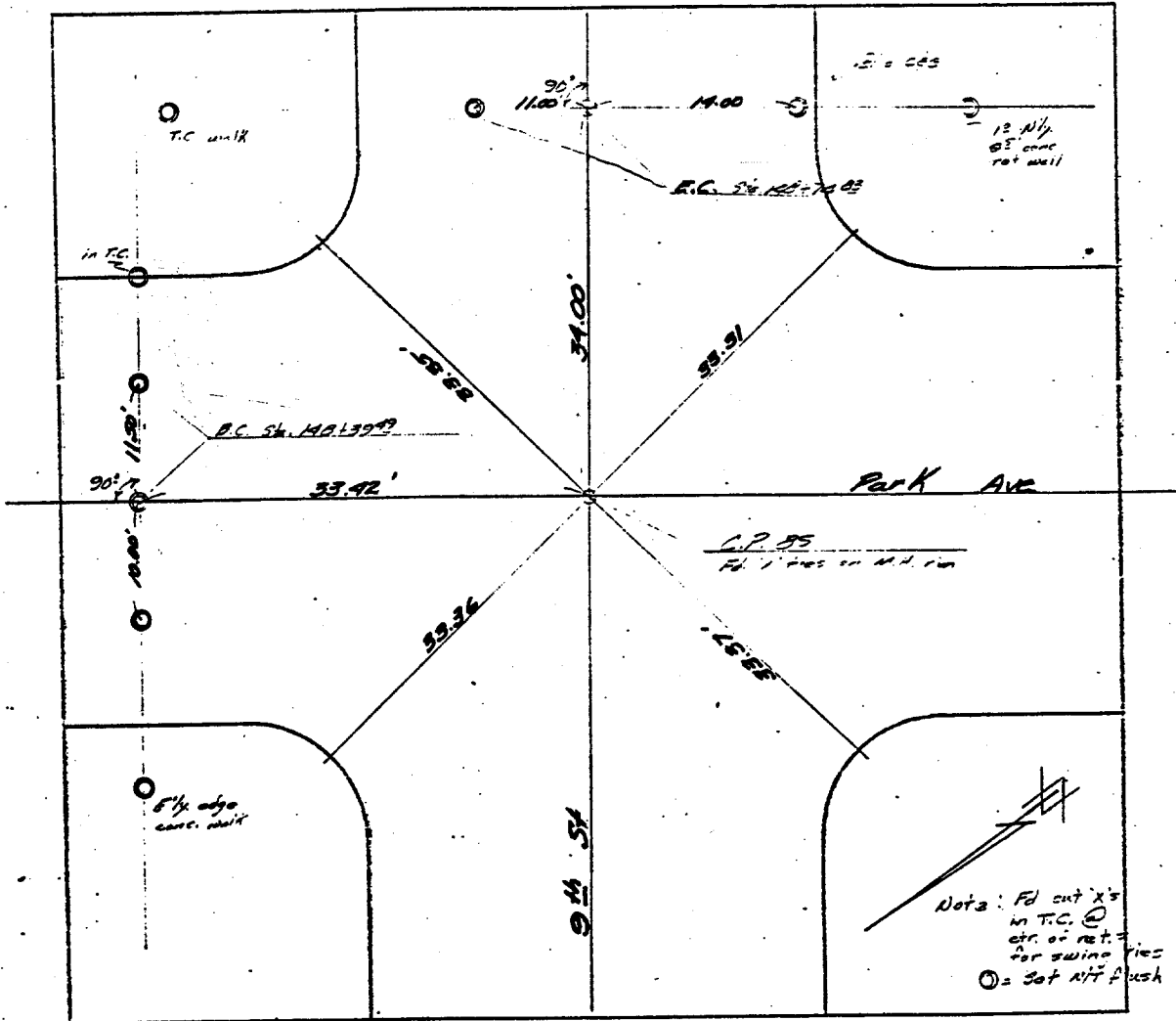


Monumentation Tie Sheet

Street: PARK AVE

6339 TIE OFFICIAL USE ONLY

X-Street: 9 TH STREET



Location: Between 9th St & 10th St - 14230-14240 or 14240-14250 EC.
 Date: 7-31-75
 Crew: Anderson, Brown, Diaz, Hernandez
 Project: Ray Building - 14230-14240 EC

PARK AVE
@ 9th St.

- FD. Ramset Nail on T/C
- FD. LD. & TK. on T/C
- FD. "C" Nail on T/C
- Set LD. & TK. on T/C

Scale:
 Date:
 Drawn by:
 W.O.:
 F.B.:

OFFICIAL TIE PLAT
CITY OF RIVERSIDE

These ties are for the purpose of perpetuating the found monumentation. No claim is made as to the relationship of the points or lines shown hereon to true boundary locations.

Sheet 1 of 1
 File No.: