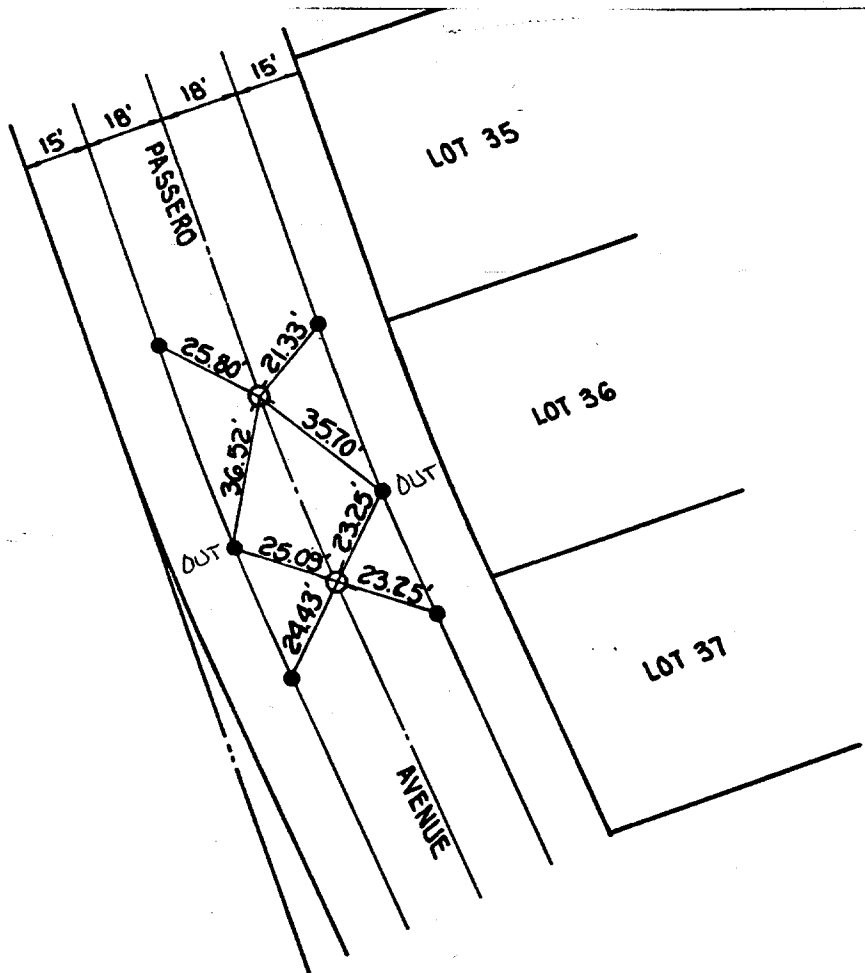


Street: **PASSERO AVE**  
**6358, T1E**  
 X-Street:  
 OFFICIAL USE ONLY



⊗ SET 1" I.P. WITH PLASTIC PLUG STAMPED R.C.E. 13116, FLUSH.  
 ● SET DRIVE PIN IN TOP OF CURB, UNLESS OTHERWISE NOTED.

G.V.W. ASSOCIATES, INC. WALNUT, CALIFORNIA	<b>MONUMENT TIES</b> FOR TRACT 19718-1	SHEET NO. <u>9</u> OF <u>10</u> DATE <u>5-21-85</u>
---	---	--

- ⊗ FD. Ramset Nail on T/C
- FD. LD. & TK. on T/C
- FD. "C" Nail on T/C
- Set LD. & TK. on T/C

Scale:  
 Date:  
 Drawn by:  
 W.O.:  
 F.B.:

**OFFICIAL TIE PLAT**  
**CITY OF RIVERSIDE**

*These ties are for the purpose of perpetuating the found monumentation. No claim is made as to the relationship of the points or lines shown hereon to true boundary locations.*

Sheet 1 of 1  
 File No.: