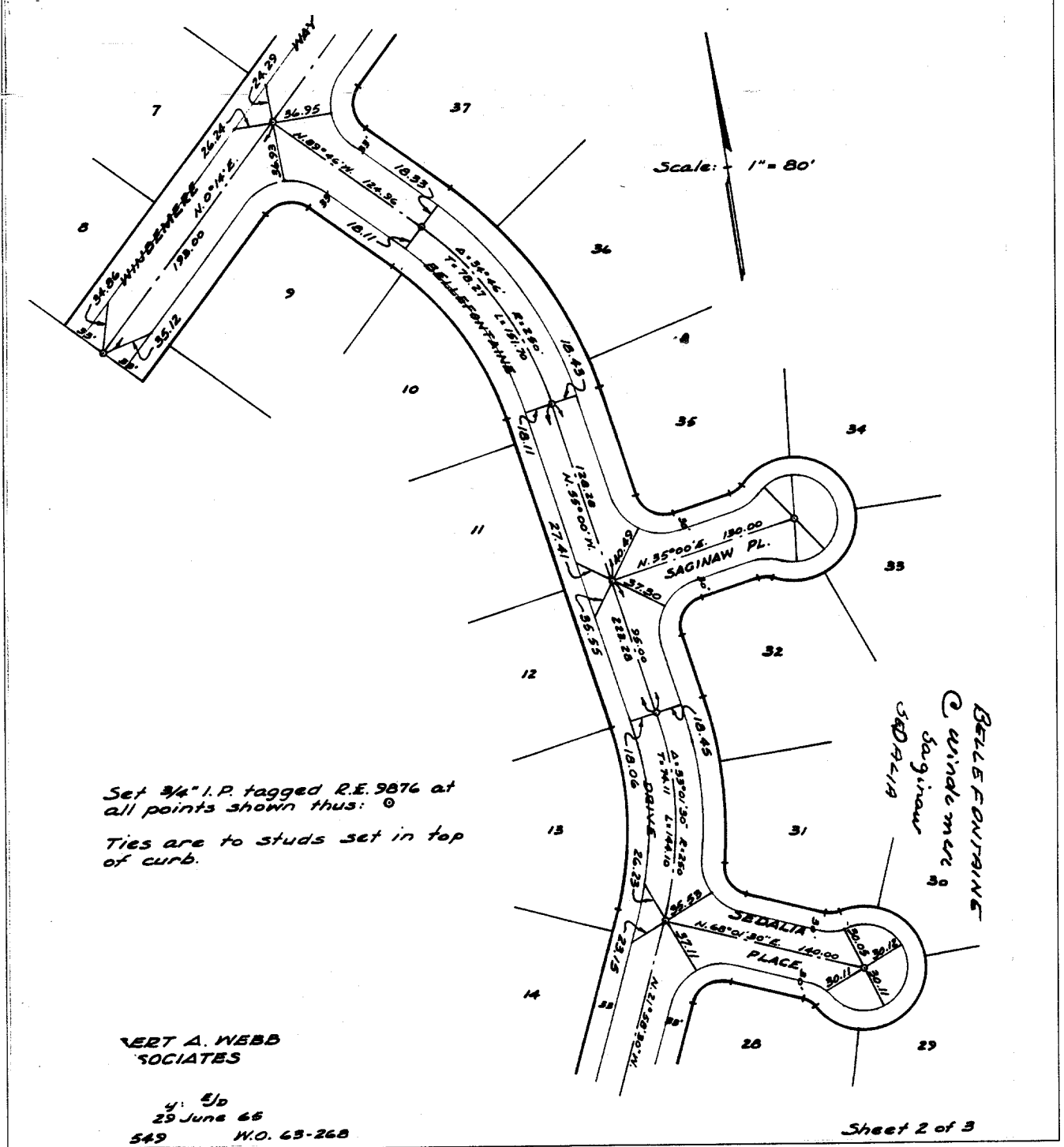


636.715

Street: BELLEFONTAINE DR. 636.715 X-Street: WINDEMERE WAY OFFICIAL USE ONLY

Being a subdivision of a portion of the N.W. 1/4 of Sec. 6, T.3S., R.4W., S.B.B. & M.



Set 3/4" I.P. tagged R.E. 9876 at all points shown thus: (circle with dot) Ties are to studs set in top of curb.

VERT A. WEBB SOCIATES

4. 5D  
29 June 65  
549 W.O. 63-268

Sheet 2 of 3

- ⊗ FD. Ramset Nail on T/C
- FD. LD. & TK. on T/C
- FD. "C" Nail on T/C
- Set LD. & TK. on T/C

Scale:  
Date:  
Drawn by:  
W.O.:  
F.B.:

**OFFICIAL TIE PLAT**  
CITY OF RIVERSIDE

These ties are for the purpose of perpetuating the found monumentation. No claim is made as to the relationship of the points or lines shown hereon to true boundary locations.

TRACT 2776

Sheet 2 of 3  
File No.: