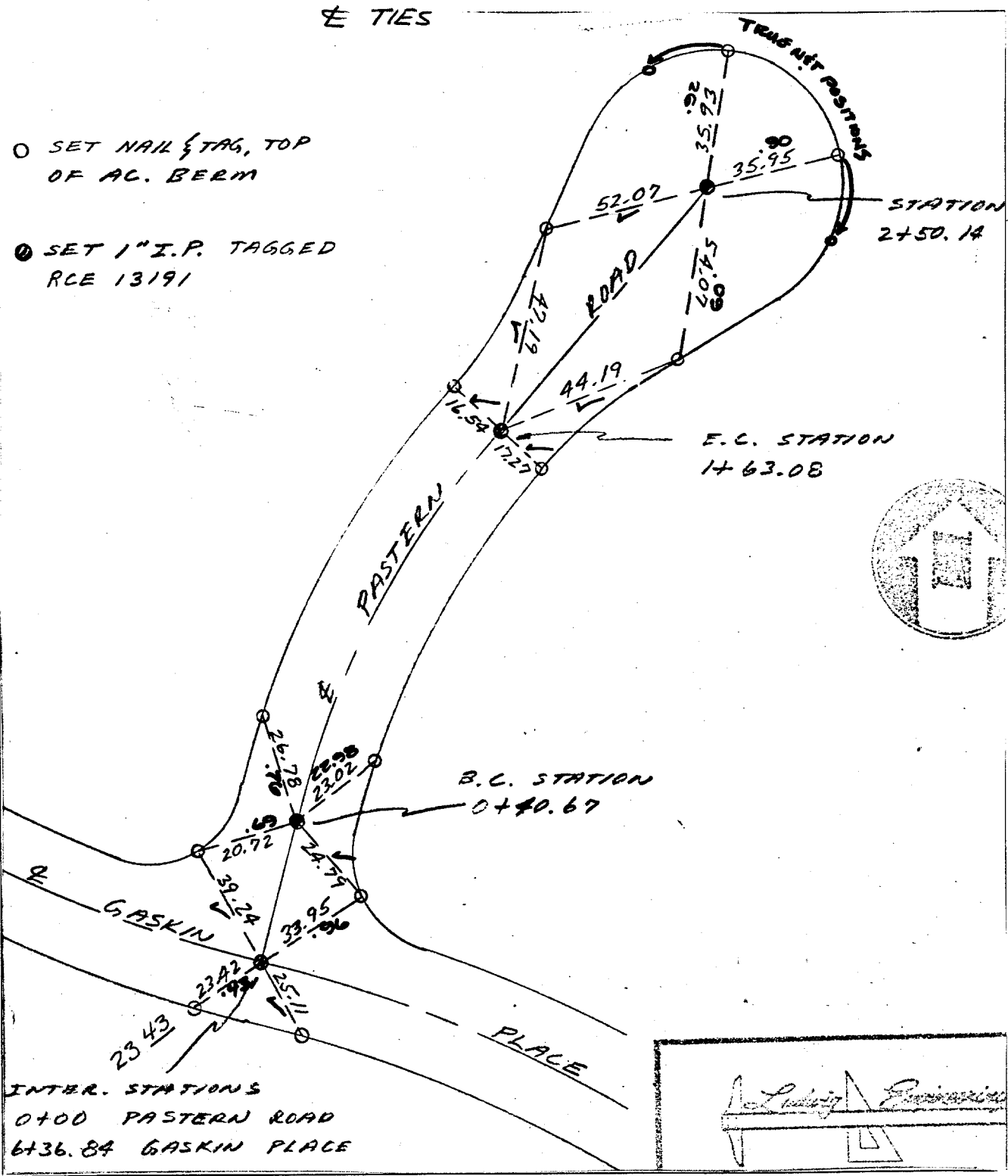


Street: PASTERN ROAD
6364.71E
 X-Street: GASKIN PLACE
 OFFICIAL USE ONLY



- SET NAIL & TAG, TOP OF AC. BERM
- SET 1" I.P. TAGGED RCE 13191

INTER. STATIONS
 0+00 PASTERN ROAD
 6+36.84 GASKIN PLACE

- × FD. Ramset Nail on T/C
- FD. LD. & TK. on T/C
- FD. "C" Nail on T/C
- Set LD. & TK. on T/C

Scale:
 Date:
 Drawn by:
 W.O.:
 F.B.:

OFFICIAL TIE PLAT
CITY OF RIVERSIDE

These ties are for the purpose of perpetuating the found monumentation. No claim is made as to the relationship of the points or lines shown hereon to true boundary locations.

TRACT 7427

Sheet 6 of 10
 File No.: