

STREET JURUPA AVE  
 6367.71F  
 OFFICE USE ONLY  
 X-STREET PAYTON AVE.

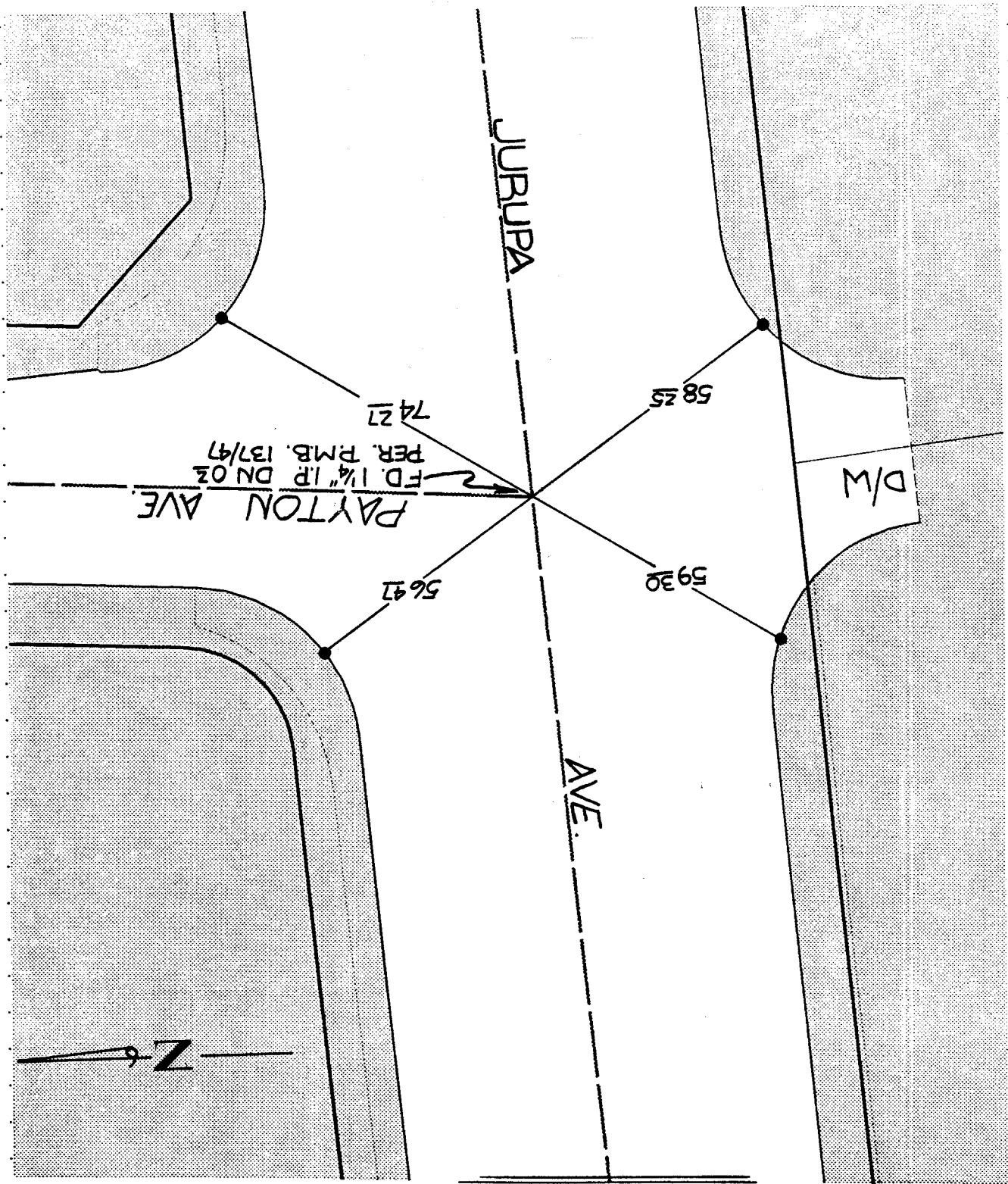
SCALE: N.T.S.  
 DATE: OCT. 30, 96  
 DR. BY: FINNEY, J  
 W.O.:  
 F.B.:

OFFICIAL TIE PLAT  
 CITY OF RIVERSIDE

These ties are for the purpose of perpetuating the found  
 monumentation. No claim is made as to the relationship of  
 the points or lines shown hereon to true boundary locations.

FILE NO.:  
 OF 1 SHEETS  
 SHEET 1

- X FD. Ramset Nail on T/C
- FD. "C" Nail on T/C
- FD. LD. & TK. on T/C
- SET LD. & TK. on T/C



TRANSIT TIES