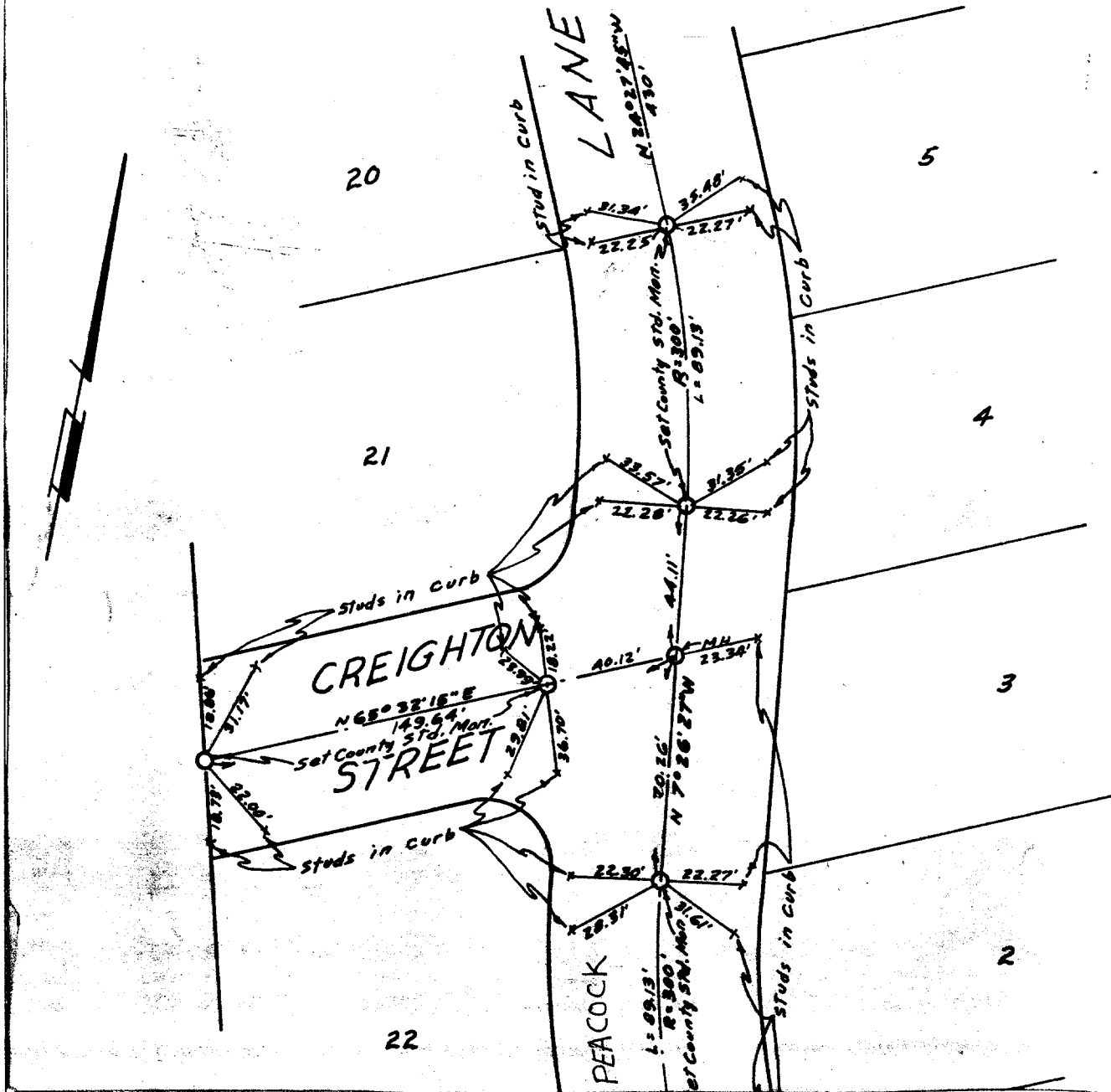


# TRACT No. 2360

PEACO

Portions of Sec. 9 & 10, T. 35., R. 6W., of Rancho La Sierra  
M.B. 6/70 Rec. Riv. Co.



✕ FD. Ramset Nail on T/C  
 ■ FD. "C" Nail on T/C

● FD. LD. & TK. on T/C  
 ○ Set LD. & TK. on T/C

Scale:  
 Date: 4/18/63  
 Drawn by: BEL  
 W.O.: 62-16  
 F.B.: 437/40

## OFFICIAL TIE PLAT CITY OF RIVERSIDE

These ties are for the purpose of perpetuating the found  
monumentation. No claim is made as to the relationship of  
the points or lines shown hereon to true boundary locations.

TRACT 2360

Sheet 1 of 1  
File No.:

Street: PEACOCK LANE  
 6377 TIE  
 OFFICIAL USE ONLY  
 X-Street: CREIGHTON STREET