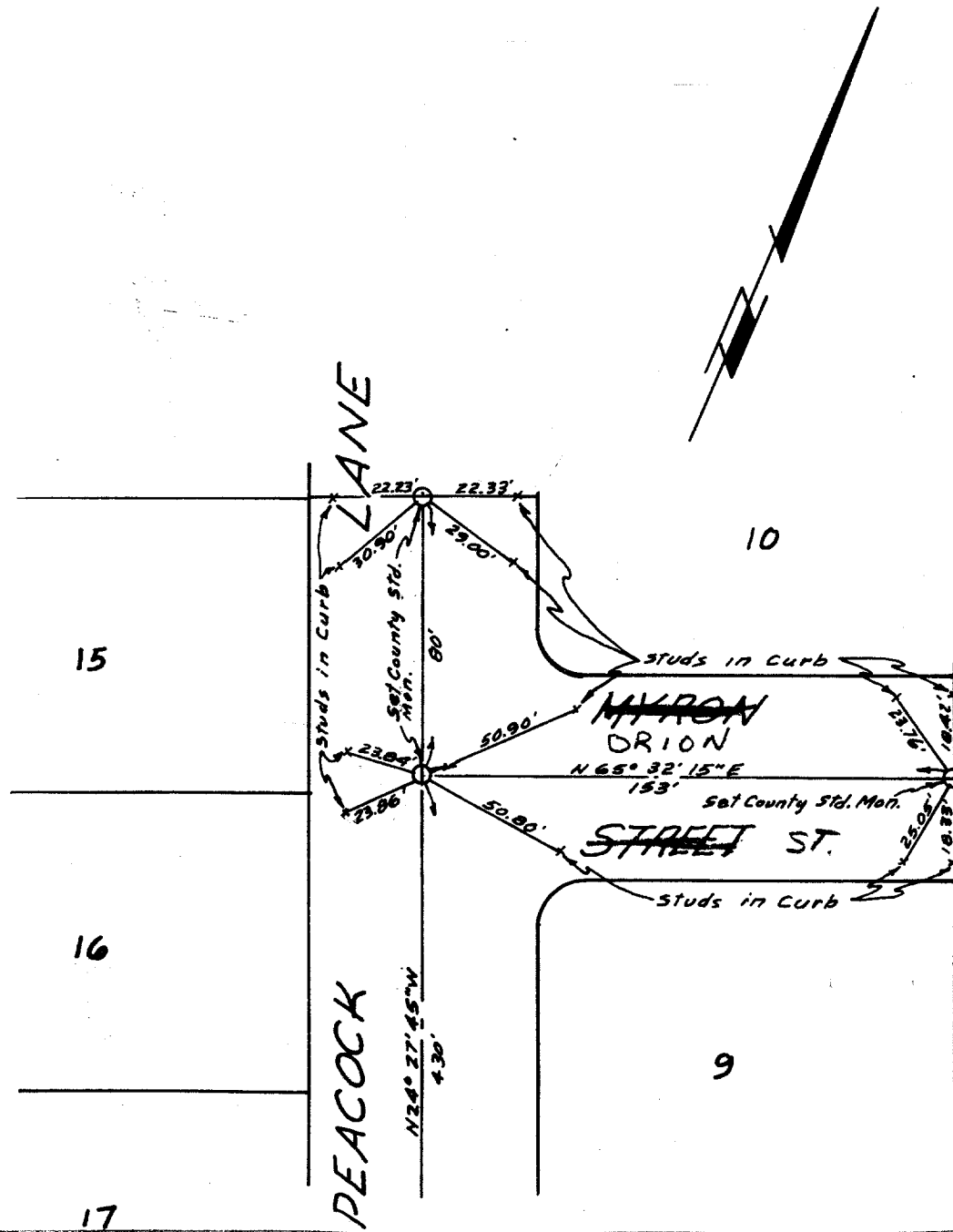


Portions of Sec. 9 & 10, T. 35., R. 6 W., of Rancho La Sierra
M.B. 6/70 Rec. Riv. Co.



Street: **PEACOCK LANE**
6380.TIF
 X-Street: **ORION ST**
 OFFICIAL USE ONLY

- ✕ FD. Ramset Nail on T/C
- FD. LD. & TK. on T/C
- FD. "C" Nail on T/C
- Set LD. & TK. on T/C

Scale:
 Date: 4/18/63
 Drawn by: BEL
 W.O.: 62-16
 F.B.: 437/40

OFFICIAL TIE PLAT
CITY OF RIVERSIDE

These ties are for the purpose of perpetuating the found monumentation. No claim is made as to the relationship of the points or lines shown hereon to true boundary locations.

TRACT 2360
 FILE 395-17
 Sheet 1 of 1
 File No.: