

Street:

PEACOCK LANE

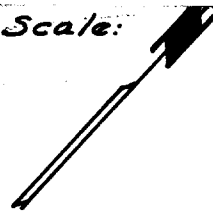
6382.71F

X-Street:

RIDGECREST DRIVE

OFFICIAL USE ONLY

Scale: 1"=50'

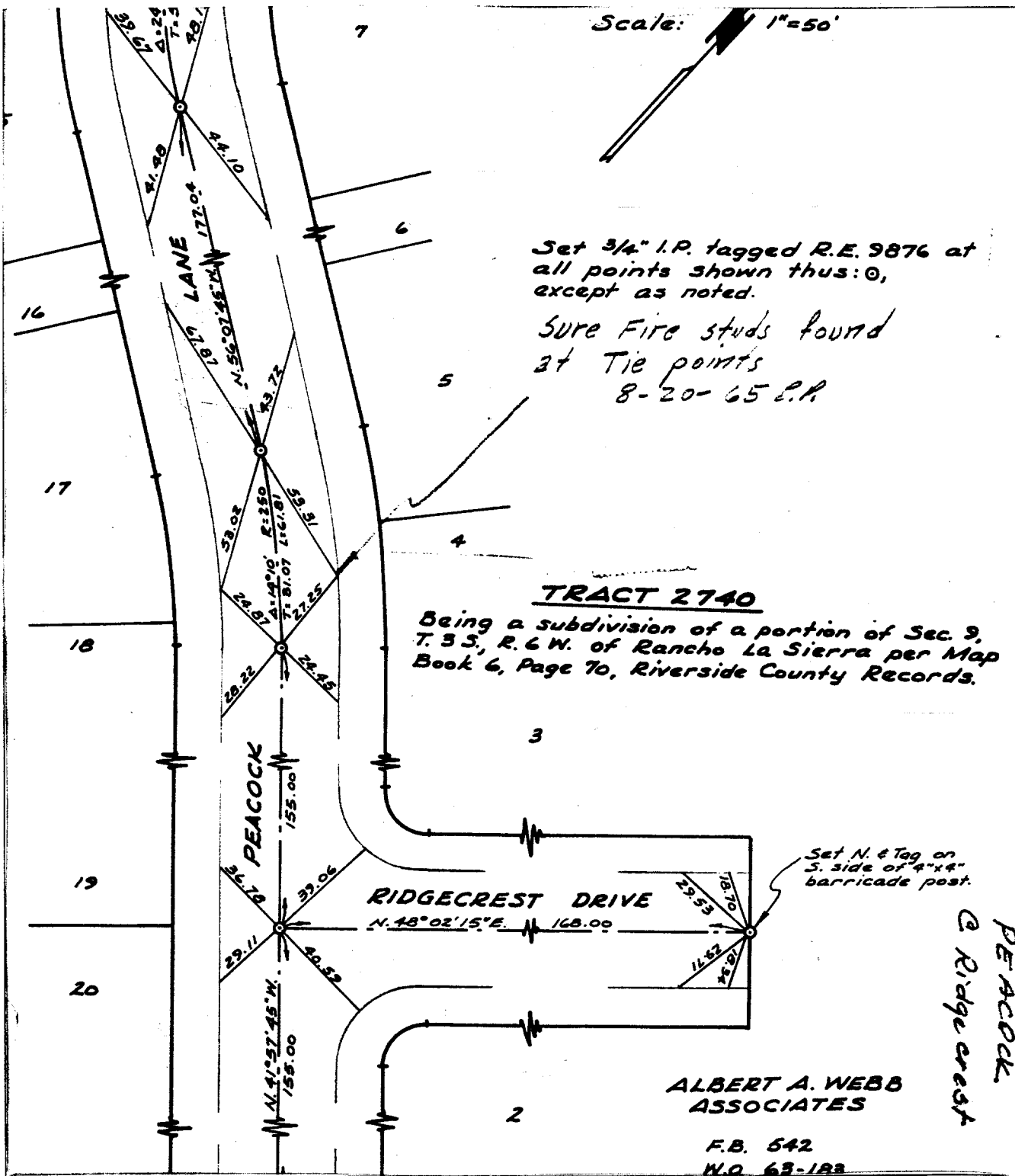


Set 3/4" I.P. tagged R.E. 9876 at all points shown thus: ○, except as noted.

Sure Fire studs found at Tie points
8-20-65 E.P.

TRACT 2740

Being a subdivision of a portion of Sec. 9, T. 3 S., R. 6 W. of Rancho La Sierra per Map Book 6, Page 70, Riverside County Records.



Set N. & Tag on S. side of 4"x4" barricade post.

PEACOCK @ Ridgecrest

ALBERT A. WEBB ASSOCIATES

F.B. 542
W.O. 63-183

- × FD. Ramset Nail on T/C
- FD. "C" Nail on T/C

- FD. LD. & TK. on T/C
- Set LD. & TK. on T/C

Scale:

Date: MAY 13, 1965

Drawn by: EJD

W.O.: 63-183

F.B.: 542

OFFICIAL TIE PLAT
CITY OF RIVERSIDE

These ties are for the purpose of perpetuating the found monumentation. No claim is made as to the relationship of the points or lines shown hereon to true boundary locations.

TRACT 2740

Sheet 2 of 3

File No.: