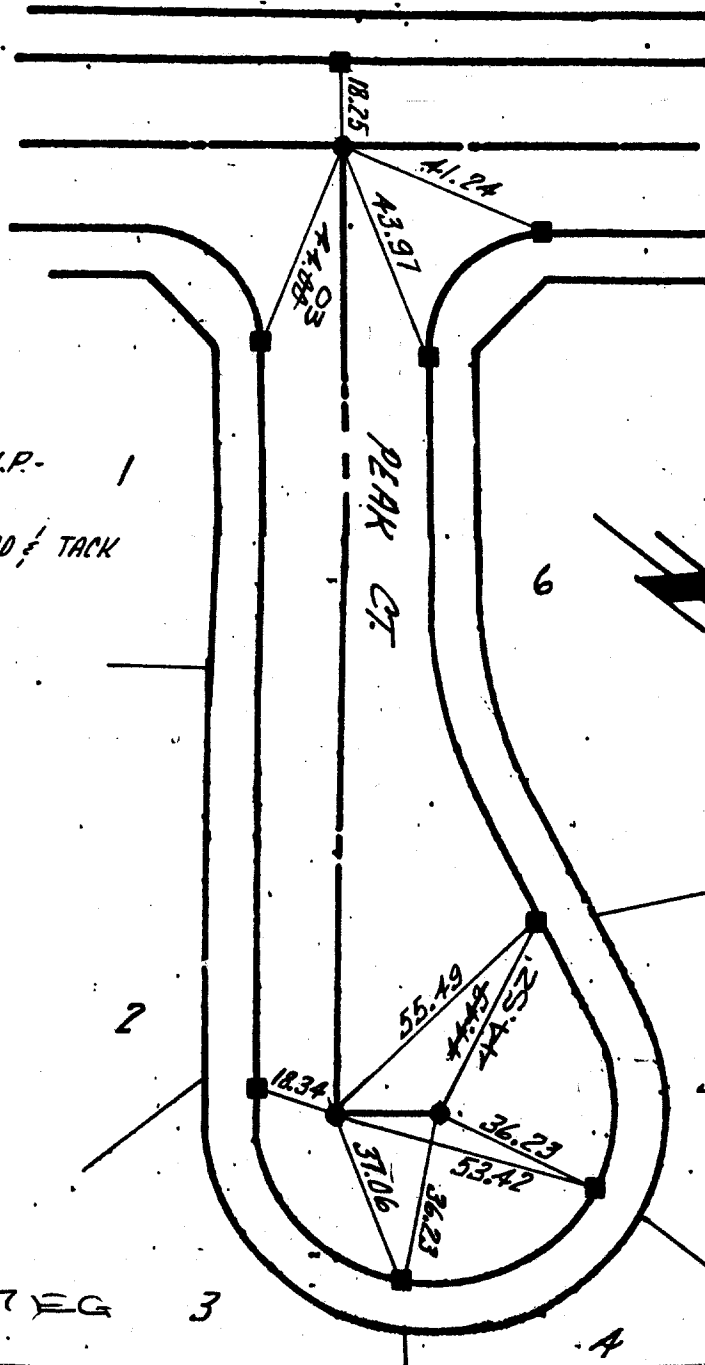


GABEL, COOK, BECKLUND
CIVIL ENGINEERING

14
HIGHRIDGE STREET



- INDICATES SET 1" I.P.-
FLUSH-R.C.E. 21740
- INDICATES SET LEAD $\frac{1}{2}$ TACK

- × FD. Ramset Nail on T/C
- FD. "C" Nail on T/C

- FD. LD. & TK. on T/C
- Set LD. & TK. on T/C

Street: PEAK COURT
6385.TIF
X-Street: HIGHRIDGE STREET
OFFICIAL USE ONLY

OFFICIAL TIE PLAT
CITY OF RIVERSIDE

These ties are for the purpose of perpetuating the found monumentation. No claim is made as to the relationship of the points or lines shown hereon to true boundary locations.

Sheet 1 of 1
File No.:

Scale:
Date:
Drawn by:
W.O.:
F.B.: