

Street: PETERS

6424.71E

OFFICIAL USE ONLY

X-Street: _____

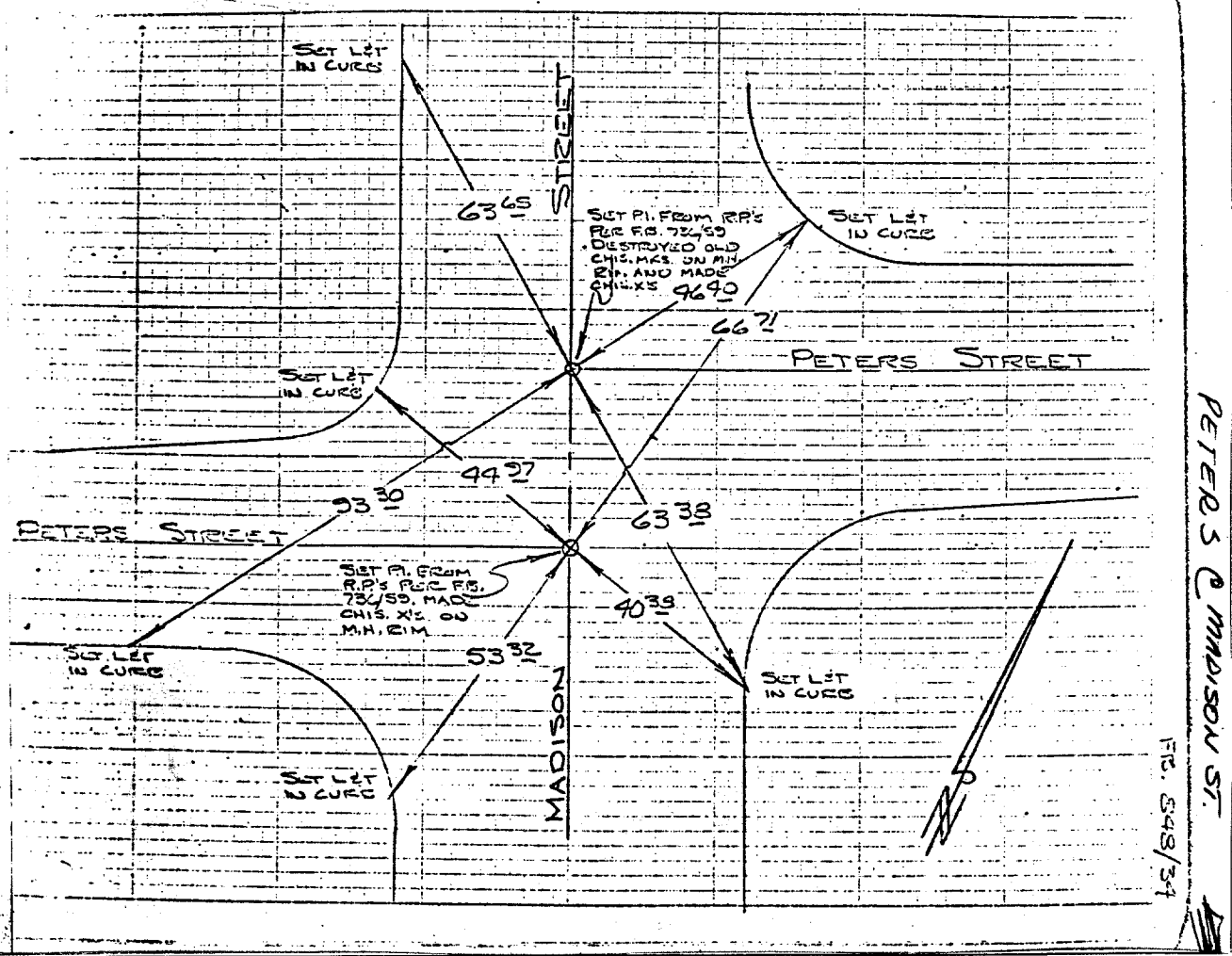
MADISON ST.

MADISON STREET
AT PETERS STREET

HISTORICAL DATA	
F.B. 736/59	
FB 729/2	
FB 521/11,51	

TRANSIT
TIES

CREW	
STEELE	
MORGAN	
FEB. 6, 1968	
FB. 848/34	



PETERS @ MADISON ST.

FB. 848/34

- ✕ FD. Ramset Nail on T/C
- FD. "C" Nail on T/C

- FD. LD. & TK. on T/C
- Set LD. & TK. on T/C

Scale: _____
 Date: _____
 Drawn by: _____
 W.O.: _____
 F.B.: _____

OFFICIAL TIE PLAT

CITY OF RIVERSIDE

These ties are for the purpose of perpetuating the found monumentation. No claim is made as to the relationship of the points or lines shown hereon to true boundary locations.

Sheet 1 of 1
 File No.: _____