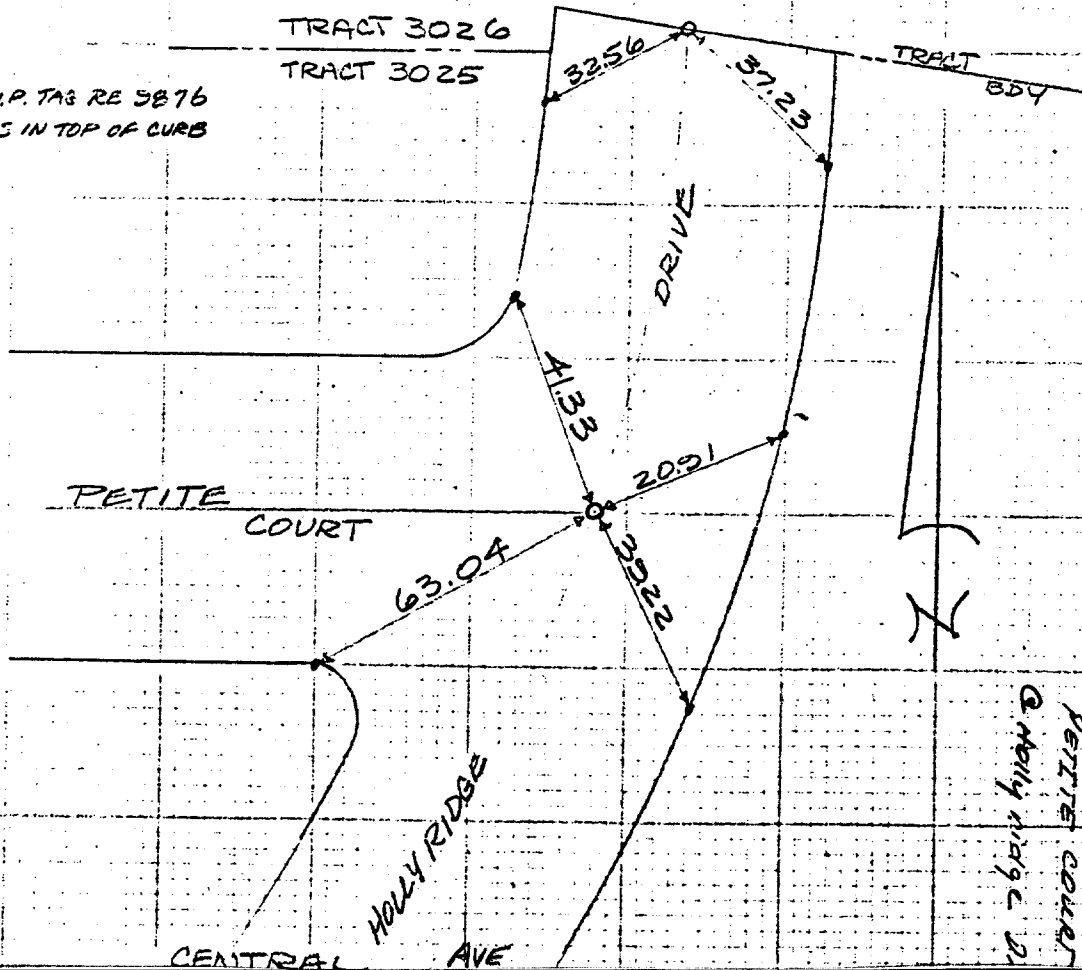


TRACT 3025  
A.A. WEBB  
FB. 559

SWING  
TIES

HOLLYRIDGE DR  
@  
PETITE COURT  
9 TRACT BDY  
COPY  
CHECKED  
6-69  
JWS JR

ON 3/4" I.P. TAG RE 5876  
ON STUDS IN TOP OF CURB



✗ FD. Ramset Nail on T/C  
■ FD. "C" Nail on T/C

● FD. LD. & TK. on T/C  
○ Set LD. & TK. on T/C

Scale:  
Date:  
Drawn by:  
W.O.:  
F.B.:

# OFFICIAL TIE PLAT

## CITY OF RIVERSIDE

*These ties are for the purpose of perpetuating the found monumentation. No claim is made as to the relationship of the points or lines shown hereon to true boundary locations.*

Sheet 1 of 1  
File No.:

Street: PETITE COURT 6429.71E OFFICIAL USE ONLY  
X-Street: HOLLYRIDGE DRIVE