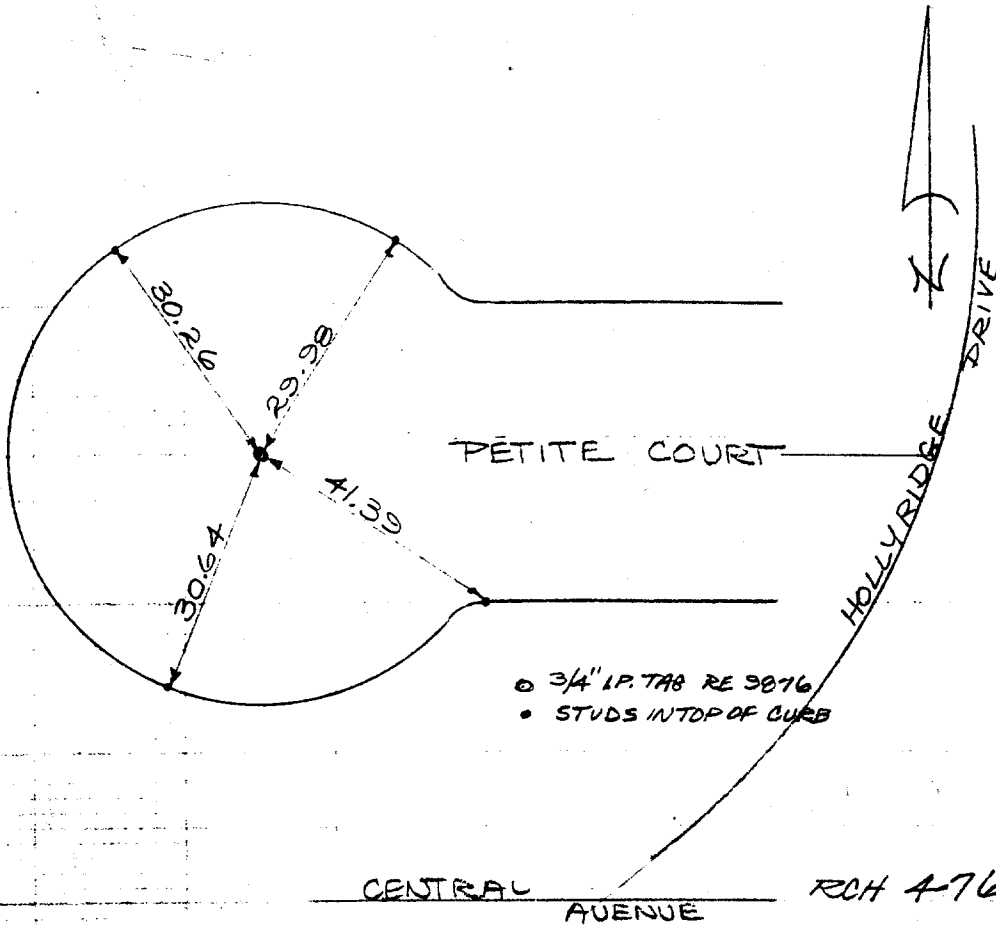


TRACT 3025
A. A. WEBB
FB 559

SWING
TIES

PETITE CT.
CUL DE SAC
COPY
CHECKED
6-69
JWS. JR.



✕ FD. Ramset Nail on T/C
■ FD. "C" Nail on T/C

● FD. LD. & TK. on T/C
○ Set LD. & TK. on T/C

Street: PETITE CIRCLE
6430.71E OFFICIAL USE ONLY
X-Street: HOLLYRIDGE DRIVE

Scale:

Date:

Drawn by:

W.O.:

F.B.:

OFFICIAL TIE PLAT

CITY OF RIVERSIDE

These ties are for the purpose of perpetuating the found monumentation. No claim is made as to the relationship of the points or lines shown hereon to true boundary locations.

Sheet 1 of 1

File No.: