

Street: PINE TREE WAY

6491.71E

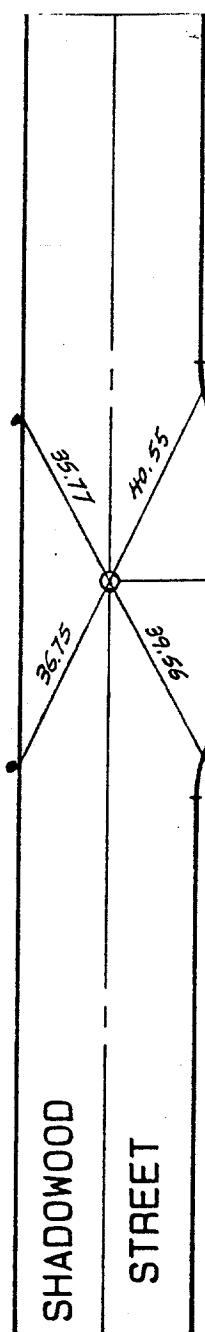
X-Street: OFFICIAL USE ONLY

SHADOWWOOD ST.

13

PINE
TREE
WAY

51



66

65

52



53

- SET 1" I.P. TAGGED L.S. 4131
- SET LEAD AND TACK ON T.C.

CITY OF RIVERSIDE

- × FD. Ramset Nail on T/C
- FD. LD. & TK. on T/C
- FD. "C" Nail on T/C
- Set LD. & TK. on T/C

Scale: _____
 Date: _____
 Drawn by: _____
 W.O.: _____
 F.B.: _____

OFFICIAL TIE PLAT
 CITY OF RIVERSIDE

These ties are for the purpose of perpetuating the found monumentation. No claim is made as to the relationship of the points or lines shown hereon to true boundary locations.

TRACT 21767

Sheet 1 of 1
 File No.: _____