

Street:

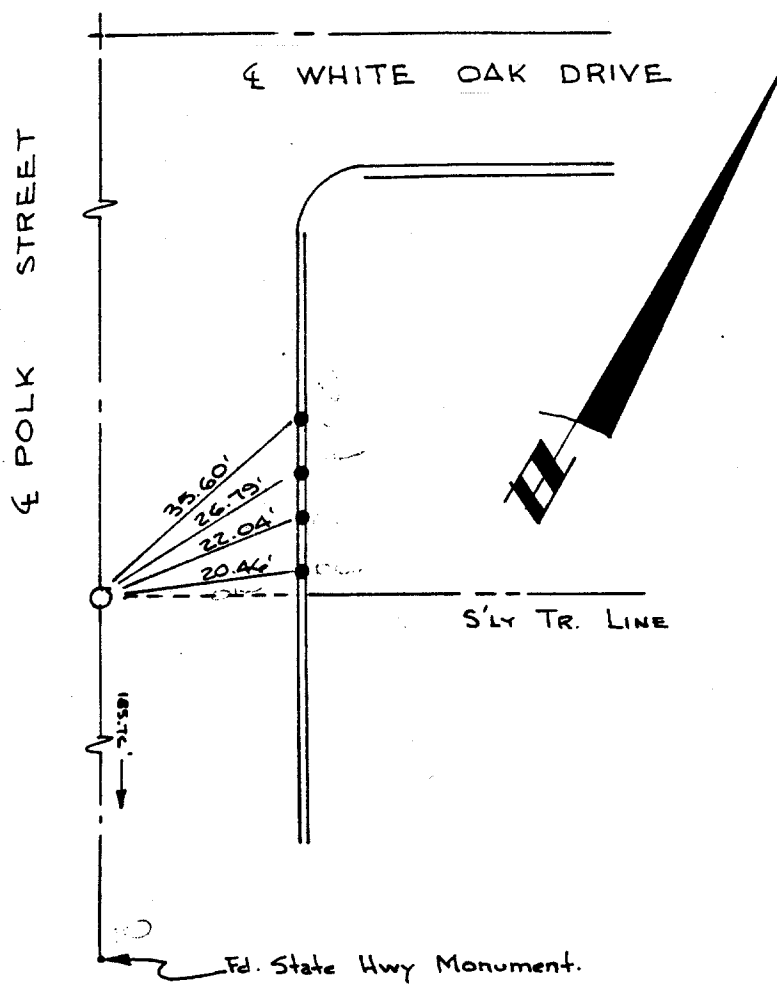
POLK ST.

6519.77E

OFFICIAL USE ONLY

X-Street:

WHITE OAK DRIVE



- SET SPIKE & TIN
- SET LEAD & TACK ON CURB

By: B. S.	ANACAL ENGINEERING CO. P.O. Box 3668 222 East Lincoln Avenue Anaheim, California 92803 (714) 774-1763	LOCATION: 5/6 MAGNOLIA w/o POLK OWNER: SHEET NO. 3 of 3
Date: 3-15-74	F. B. # 3777	
SCALE:		

POLK ST #12

- ✕ FD. Ramset Nail on T/C
- FD. LD. & TK. on T/C
- FD. "C" Nail on T/C
- Set LD. & TK. on T/C

Scale:
Date: 3-15-74
Drawn by:
W.O.:
F.B.: 3777

OFFICIAL TIE PLAT

CITY OF RIVERSIDE

These ties are for the purpose of perpetuating the found monumentation. No claim is made as to the relationship of the points or lines shown hereon to true boundary locations.

TRACT 4660

Sheet 3 of 3

File No.: