

6550.71F

Street: PRIMROSE DRIVE X-Street: MYERS ST.

OFFICIAL USE ONLY

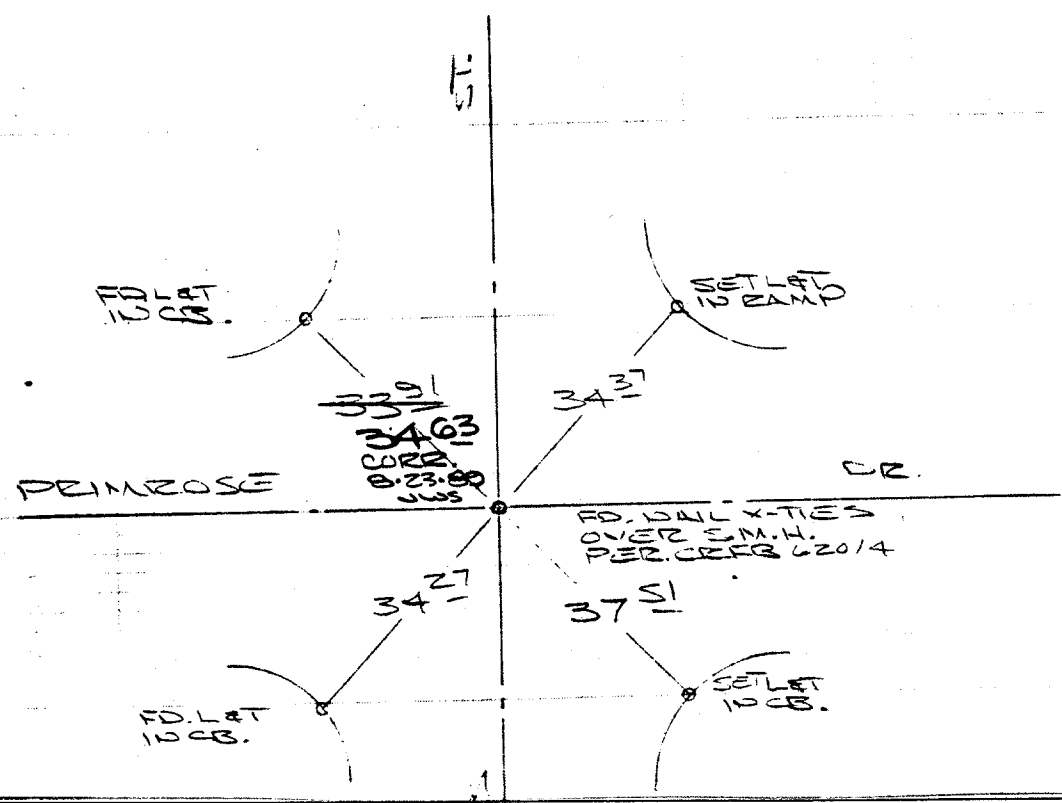
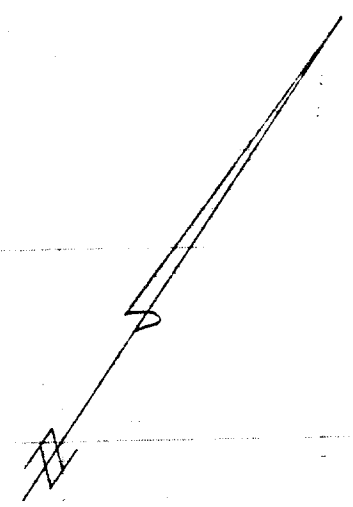
INDEX LL18 P.69-A

TRANSIT TIES

HISTORICAL DATA

CEFB 620/4

GARCIA-KLIZ-STEPHENS



- ✕ FD. Ramset Nail on T/C
- FD. LD. & TK. on T/C
- FD. "C" Nail on T/C
- Set LD. & TK. on T/C

OFFICIAL TIE PLAT

CITY OF RIVERSIDE

These ties are for the purpose of perpetuating the found monumentation. No claim is made as to the relationship of the points or lines shown hereon to true boundary locations.

Scale:

Date:

Drawn by:

W.O.:

F.B.:

Sheet 1 of 1

File No.: