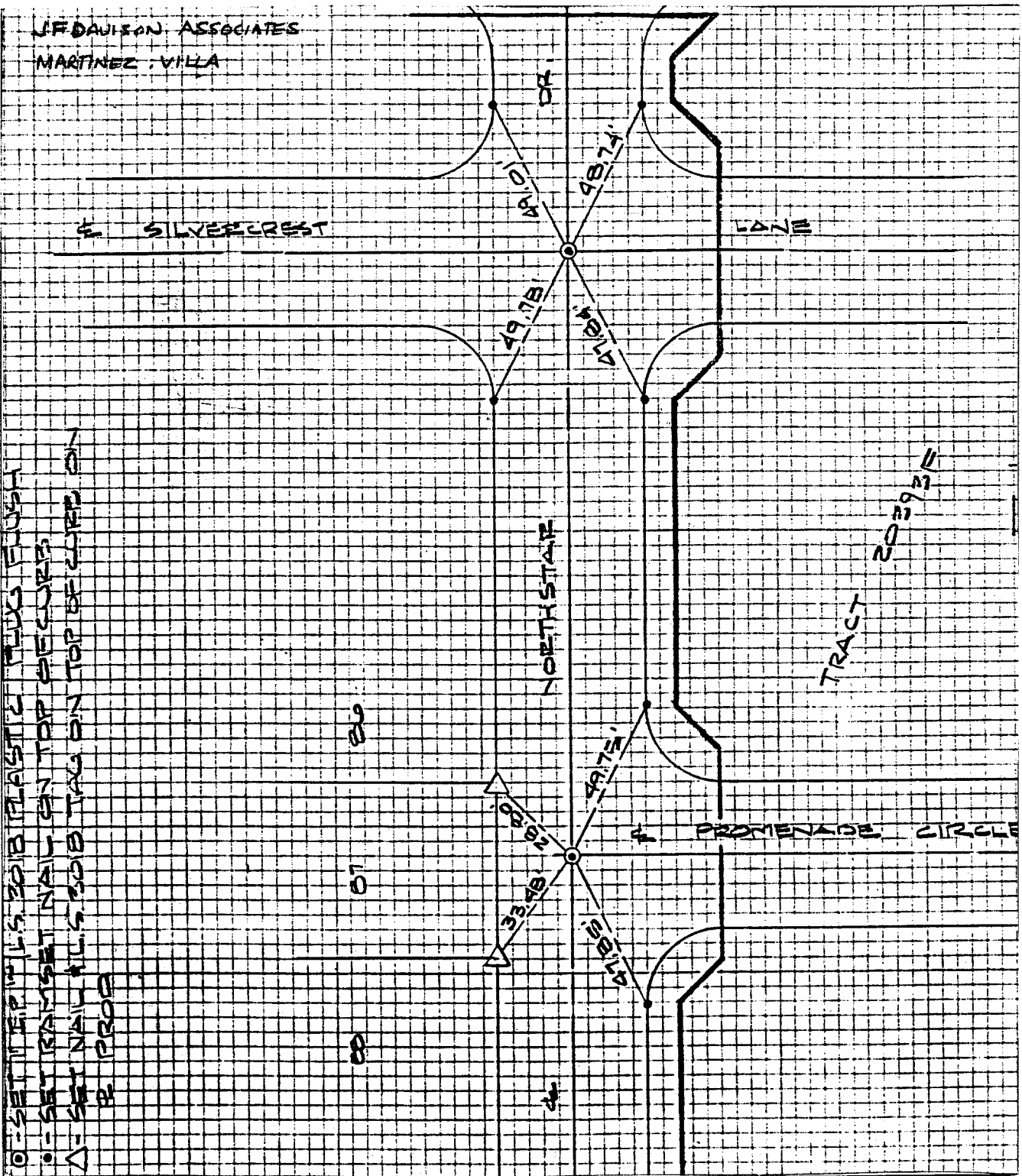


6580.71F

Street: PROMENADE CIRCLE

X-Street: NORTH STAR DR.
OFFICIAL USE ONLY



○ = SET IN P.P. 1/4" L.S. 2018 PLASTIC PLUG FLUSH WITH SURFACE
 ● = SET RAMSET NAIL ON TOP SECURE
 ▲ = SET NAIL ALLS 2018 TAG ON TOP SECURE ON P PROP

- ✕ FD. Ramset Nail on T/C
- FD. LD. & TK. on T/C
- FD. "C" Nail on T/C
- Set LD. & TK. on T/C

Scale:
 Date: 10-3-90
 Drawn by:
 W.O.:
 F.B.: 12640/84

OFFICIAL TIE PLAT
 CITY OF RIVERSIDE

These ties are for the purpose of perpetuating the found monumentation. No claim is made as to the relationship of the points or lines shown hereon to true boundary locations.

TRACT 20393-3

Sheet 1 of 1
 File No.: