

6587.71F

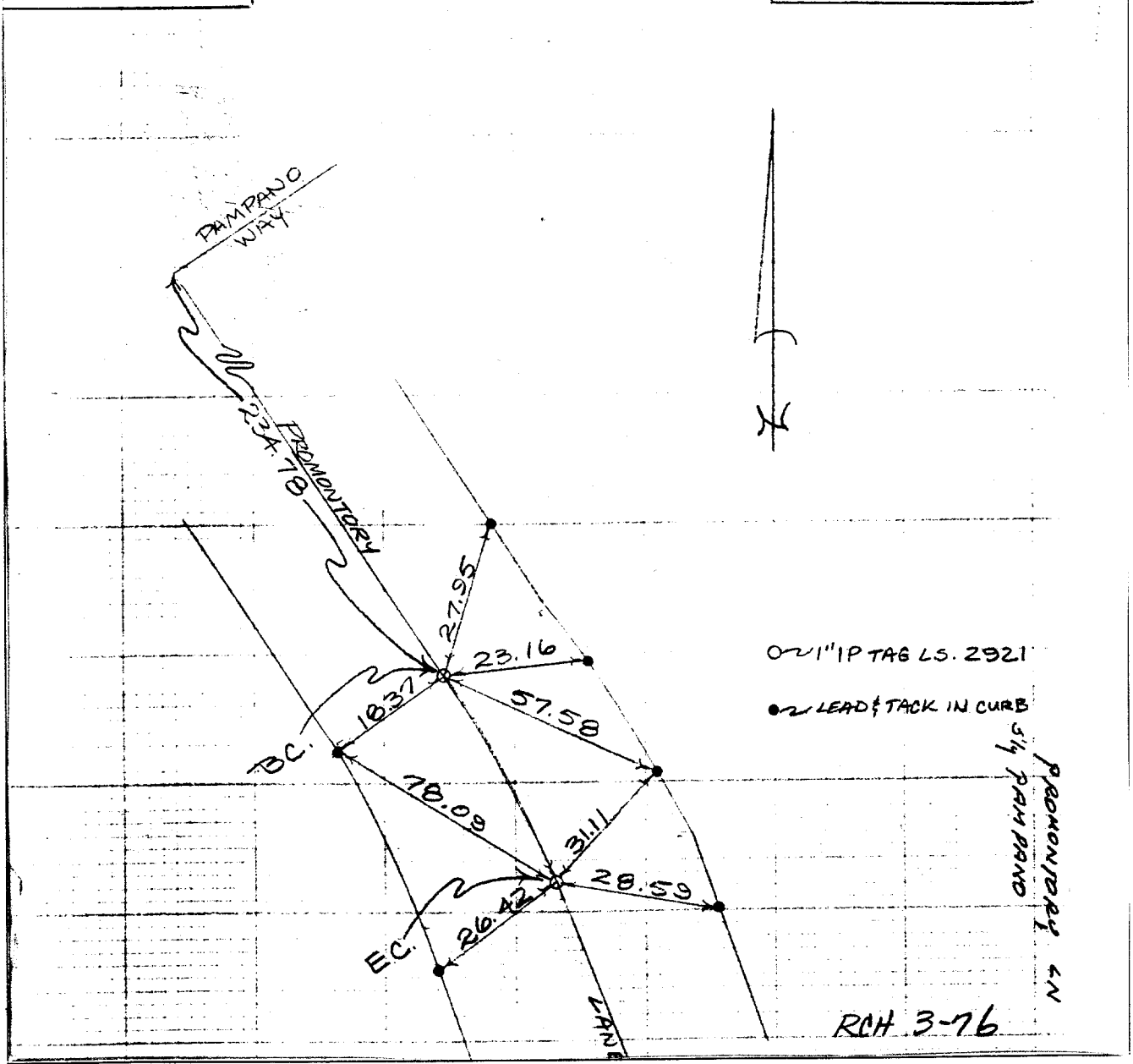
Street: PROMONTORY LANE S'LY X-Street: POMPANO WAY

OFFICIAL USE ONLY

V.T.N. CONSOLIDATED TRACT NO. 4290

SWING TIES

PROMONTORY LANE S'LY OF POMPANO WAY B.C. & E.C. COPY FIELD OKD 2/76 JHT



0.2" IP TAG LS. 2921

0.2 LEAD & TACK IN CURB

PROMONTORY LN S'LY POMPANO WAY

RCH 3-76

- ✕ FD. Ramset Nail on T/C
- FD. LD. & TK. on T/C
- FD. "C" Nail on T/C
- Set LD. & TK. on T/C

Scale:
 Date:
 Drawn by:
 W.O.:
 F.B.:

OFFICIAL TIE PLAT
CITY OF RIVERSIDE

These ties are for the purpose of perpetuating the found monumentation. No claim is made as to the relationship of the points or lines shown hereon to true boundary locations.

Sheet 1 of 1
 File No.: