

6589.71E

Street: PROMONTORY LANE

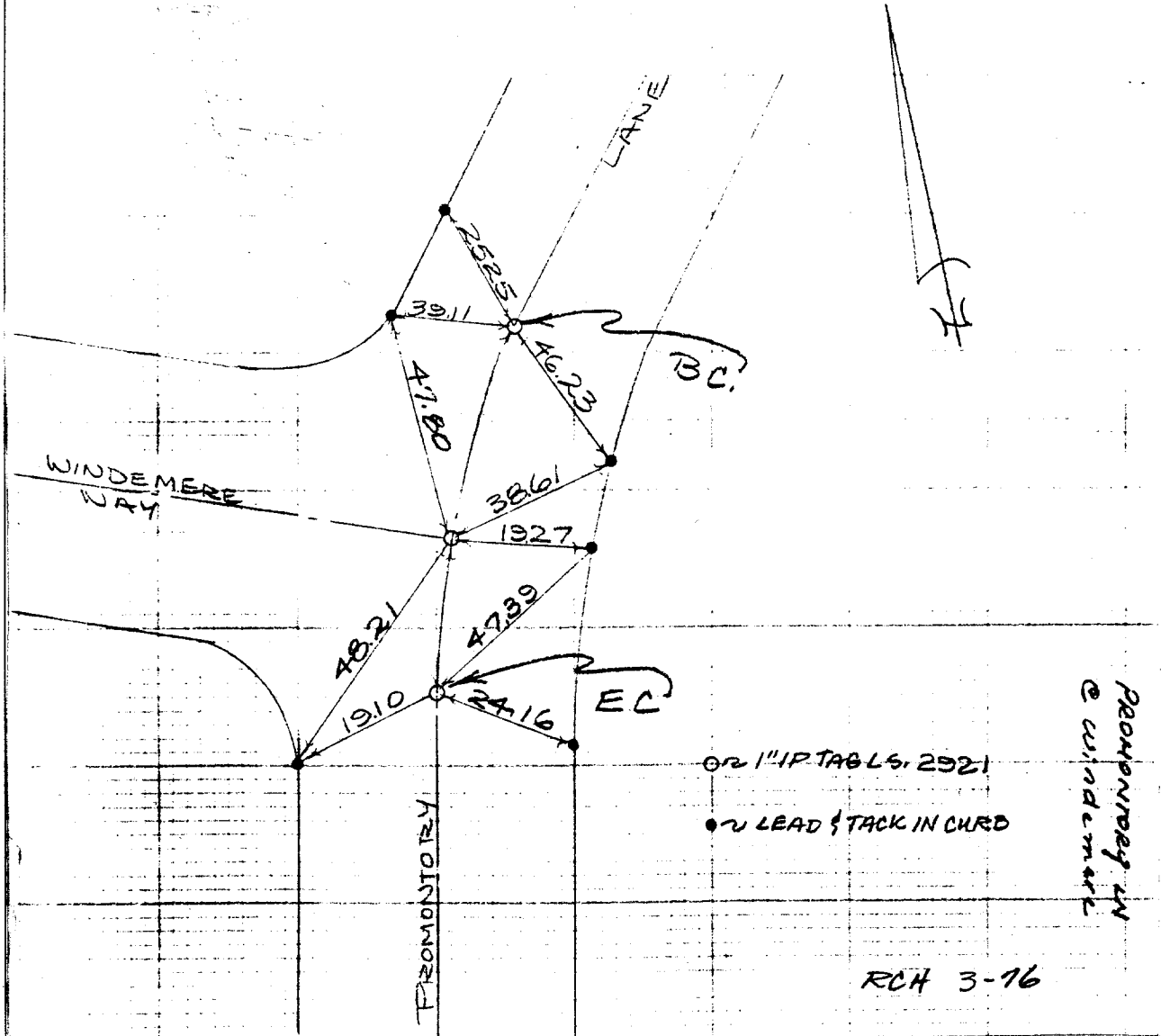
OFFICIAL USE ONLY

X-Street: WINDEMERE WAY

VTN CONSOLIDT.
TR. NO. 4111

SWING TIES

PROMONTORY LANE
@
WINDEMERE WAY
BC & EC.
COPY
FIELD OKD 2/76
JHT



- × FD. Ramset Nail on T/C
- FD. LD. & TK. on T/C
- FD. "C" Nail on T/C
- Set LD. & TK. on T/C

Scale:
Date:
Drawn by:
W.O.:
F.B.:

OFFICIAL TIE PLAT

CITY OF RIVERSIDE

These ties are for the purpose of perpetuating the found monumentation. No claim is made as to the relationship of the points or lines shown hereon to true boundary locations.

Sheet 1 of 1
File No.: