

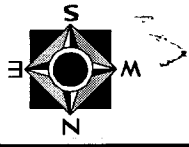
Scale: 1" = 20'
Date: 03/02/99
Drawn by: scurtis Jf
W.O.:
F.B.:

These ties are for the purpose of perpetuating the found
monumentation. No claim is made as to the relationship of
the points or lines shown hereon to true boundary locations.

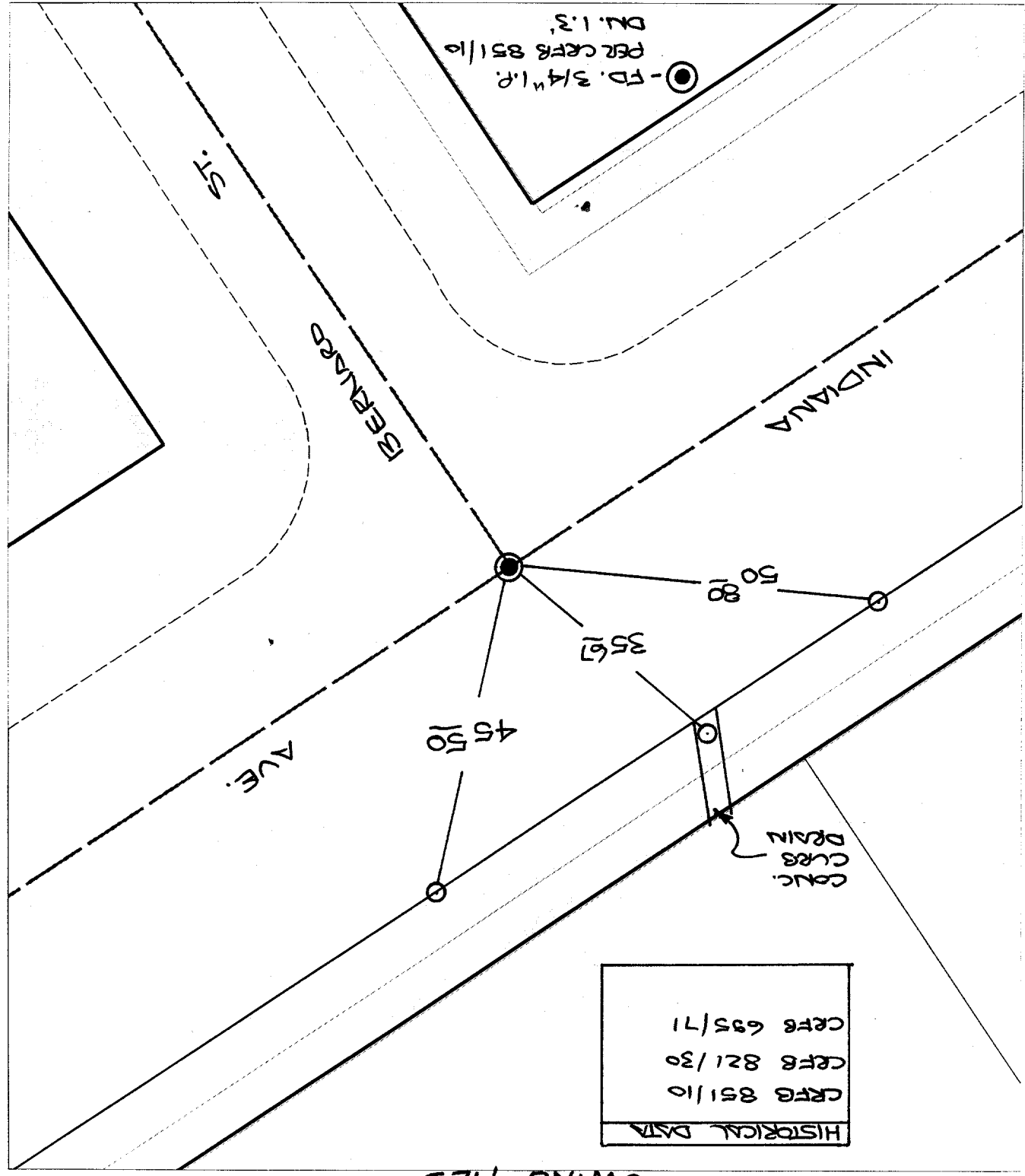
File No.:
Sheet 1 of 1

OFFICIAL TIE PLAT

CITY OF RIVERSIDE



× FD. Ramset Nail on T/C
■ FD. "C" Nail on T/C
● FD. LD. & TK. on T/C
○ Set LD. & TK. on T/C



Street: **660.71F**
INDIANA AVE
X-Street: BERNARD ST
OFFICIAL USE ONLY

"SWING TIES"

660.71F