

Street:

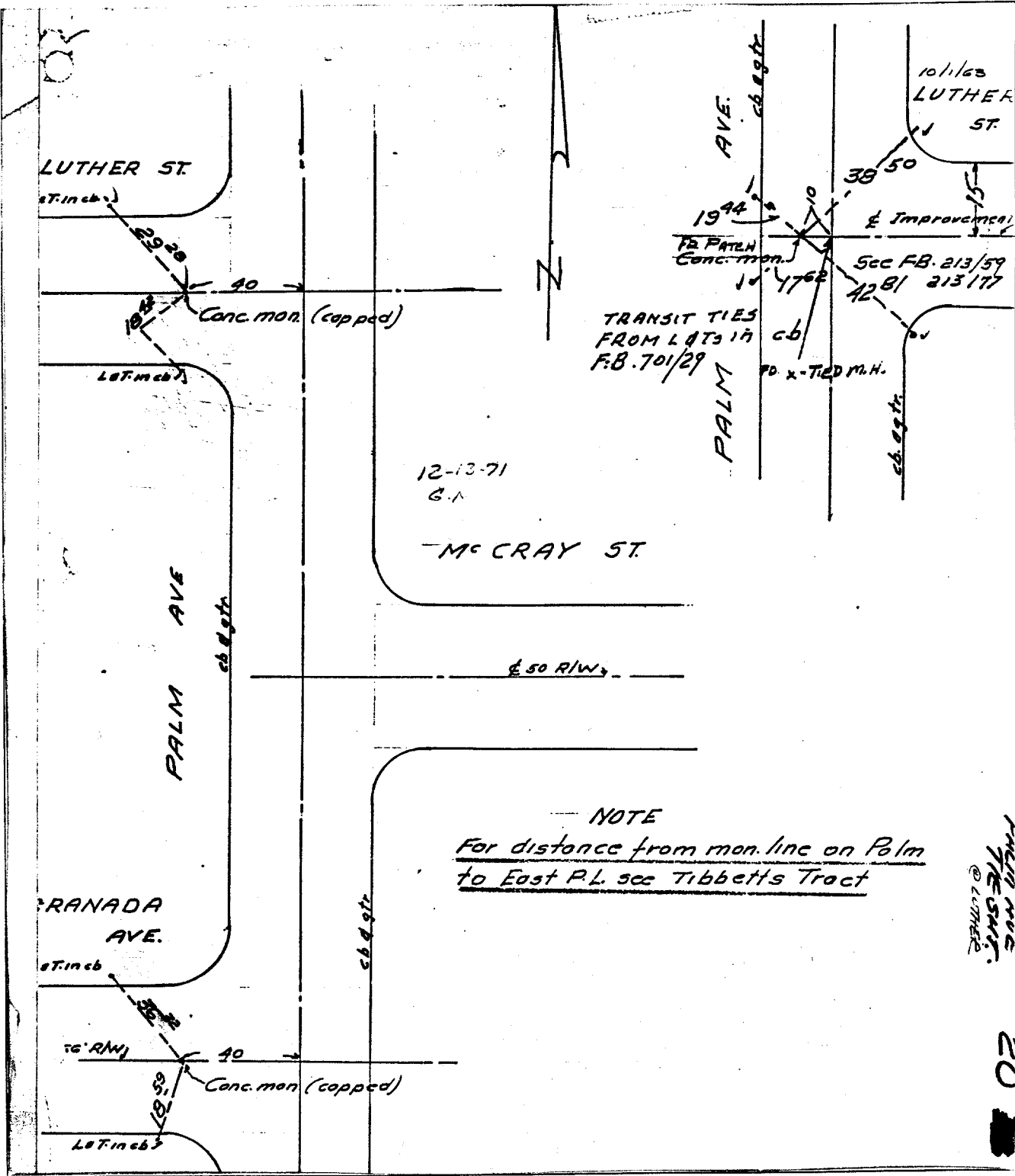
PALM AVE

6651 TIE

OFFICIAL USE ONLY

X-Street:

Mc CRAY ST.



NOTE
 For distance from mon. line on Palm
 to East P.L. see Tibbetts Tract

PLAT NO. 6651 TIE
 © LUTHER

20

- ✕ FD. Ramset Nail on T/C
- FD. LD. & TK. on T/C
- FD. "C" Nail on T/C
- Set LD. & TK. on T/C

Scale:
 Date:
 Drawn by:
 W.O.:
 F.B.:

OFFICIAL TIE PLAT

CITY OF RIVERSIDE

These ties are for the purpose of perpetuating the found monumentation. No claim is made as to the relationship of the points or lines shown hereon to true boundary locations.

Sheet 1 of 1
 File No.: