

Street: PENNSYLVANIA AVE

6670.71 F

X-Street: HIGH ST.  
OFFICIAL USE ONLY

**HISTORICAL  
DATA**

CRFB 630/25

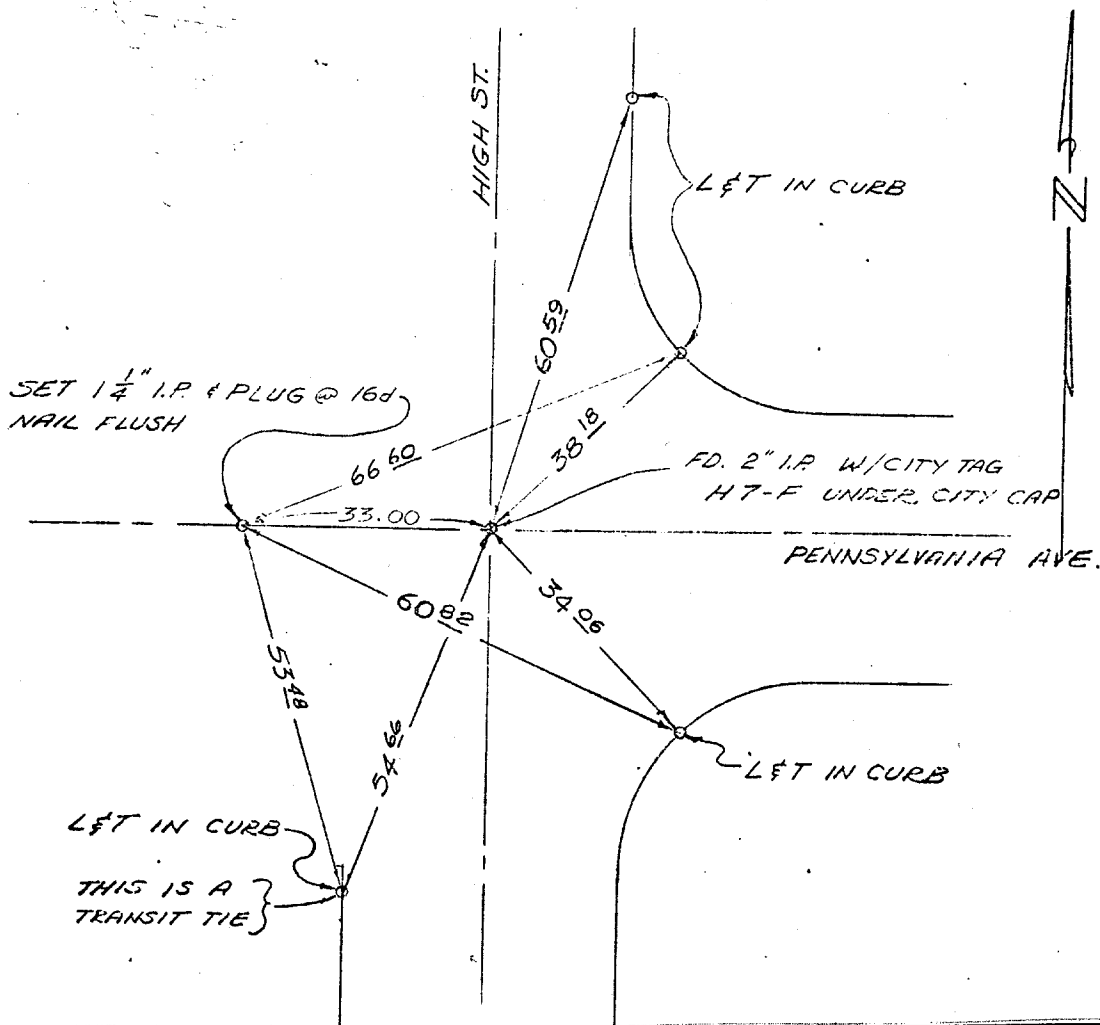
CRFB 735/40

PENNSYLVANIA @  
HIGH ST.

SWING TIES

**CHECKED**

5-27-69  
BY JWS.



- × FD. Ramset Nail on T/C  
■ FD. "C" Nail on T/C

- FD. LD. & TK. on T/C  
○ Set LD. & TK. on T/C

Scale:

Date:

Drawn by:

W.O.:

F.B.:

**OFFICIAL TIE PLAT  
CITY OF RIVERSIDE**

*These ties are for the purpose of perpetuating the found  
monumentation. No claim is made as to the relationship of  
the points or lines shown hereon to true boundary locations.*

Sheet 1 of 1

File No.: