

SURVEY OF PENNSYLVANIA AVE @ IOWA AVE.
 SURVEYED BY LOPEZ - HOTCHKISS - TOSTEN

INDEX

LL 35

PAGE

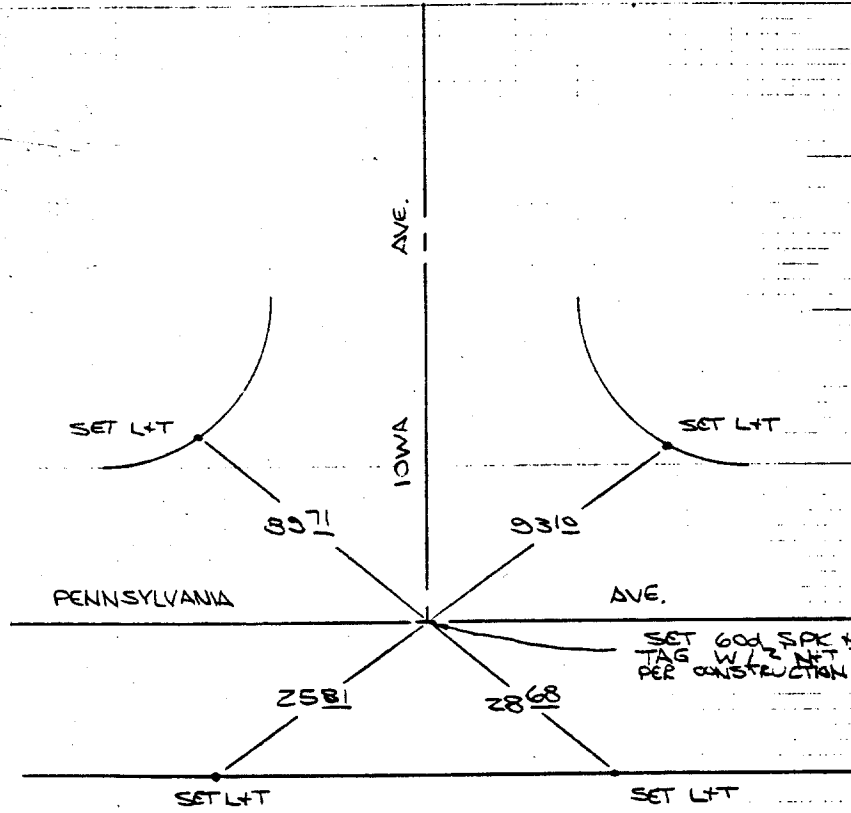
104A

DATE

JUNE 24, 1953

TRANSIT TIES

REF: LL 26/79
 LL 11/61A



"NOTE"
 CONSTRUCTION TIES WERE
 MADE DIRECTLY TO THE
 2" BRASS DISC CALLED
 OUT IN REF LL 26/79.
 THE DISC REMAINS
 IN PLACE BUT HAS
 BEEN PAVED OVER.

- ✕ FD. Ramset Nail on T/C
- FD. "C" Nail on T/C

- FD. LD. & TK. on T/C
- Set LD. & TK. on T/C

Street: PENNSYLVANIA AVE
 6674.TIF
 X-Street: IOWA AVE
 OFFICIAL USE ONLY

Scale:

Date:

Drawn by:

W.O.:

F.B.:

OFFICIAL TIE PLAT
CITY OF RIVERSIDE

*These ties are for the purpose of perpetuating the found
 monumentation. No claim is made as to the relationship of
 the points or lines shown hereon to true boundary locations.*

Sheet 1 of 1

File No.: