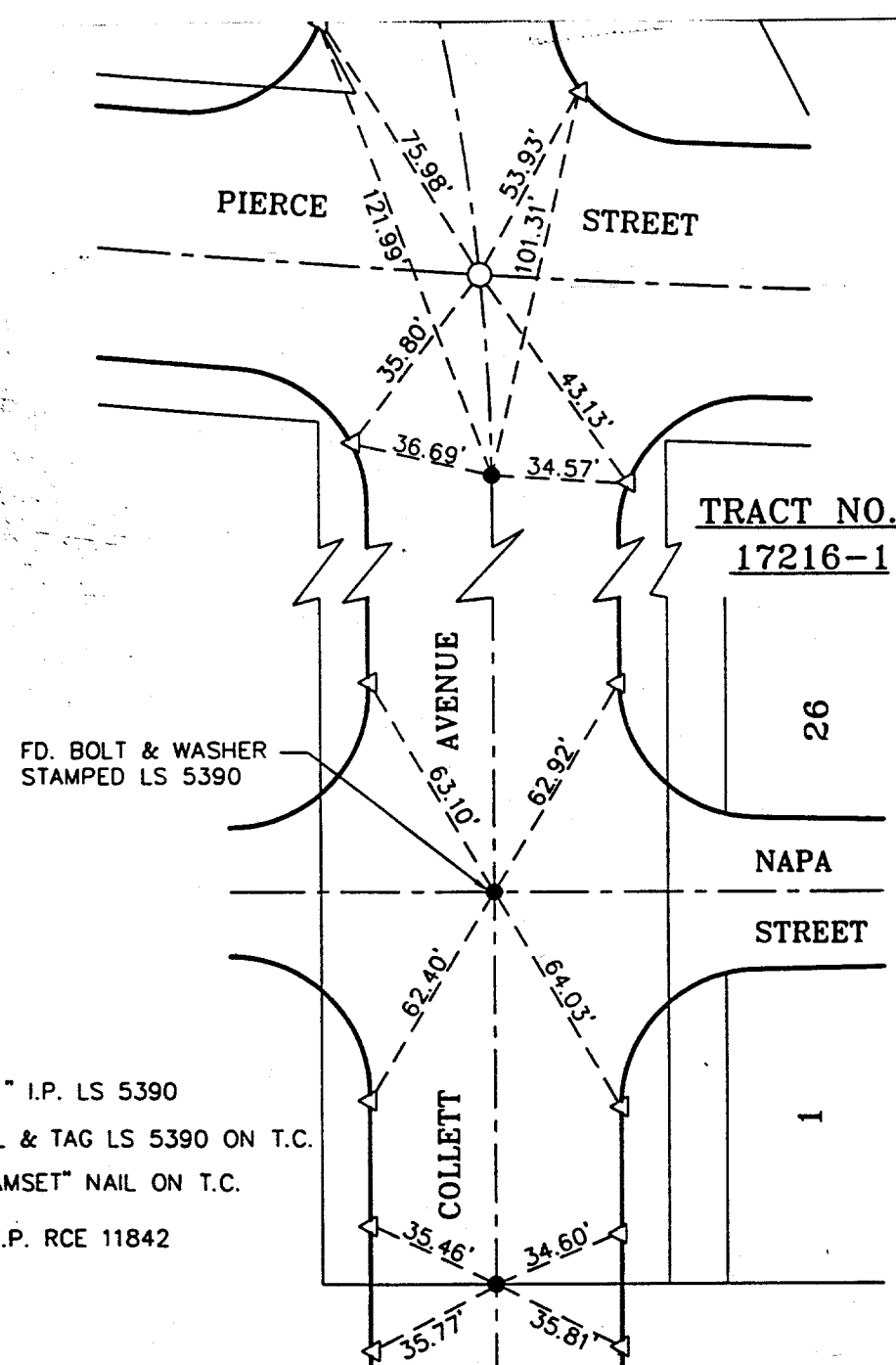


Street: **PIERCE ST**
6679.71F
 X-Street: **COLLETT AVE**
 OFFICIAL USE ONLY



TRACT NO.
 17216-1

26

NAPA STREET

1

SEE SHEET 2

FD. BOLT & WASHER
 STAMPED LS 5390

- FOUND 1" I.P. LS 5390
- ▲ FOUND L & TAG LS 5390 ON T.C.
- △ SET "RAMSET" NAIL ON T.C.
- SET 1" I.P. RCE 11842

SCALE:	1"=40'
DATE:	DEC 1995
DR. BY:	CK. BY:
W.O.	83-115
F.B.:	

OFFICIAL TIE PLAT
CITY OF RIVERSIDE
 ALBERT A. WEBB ASSOCIATES
 CONSULTING ENGINEERS
 RIVERSIDE, CALIFORNIA

SHEET	1
OF	3 SHEETS
FILE NO.	

- × FD. Ramset Nail on T/C
- FD. LD. & TK. on T/C
- FD. "C" Nail on T/C
- Set LD. & TK. on T/C

Scale:
Date:
Drawn by:
W.O.:
F.B.:

OFFICIAL TIE PLAT
CITY OF RIVERSIDE

These ties are for the purpose of perpetuating the found monumentation. No claim is made as to the relationship of the points or lines shown hereon to true boundary locations.

Sheet 1 of 3
 File No.: