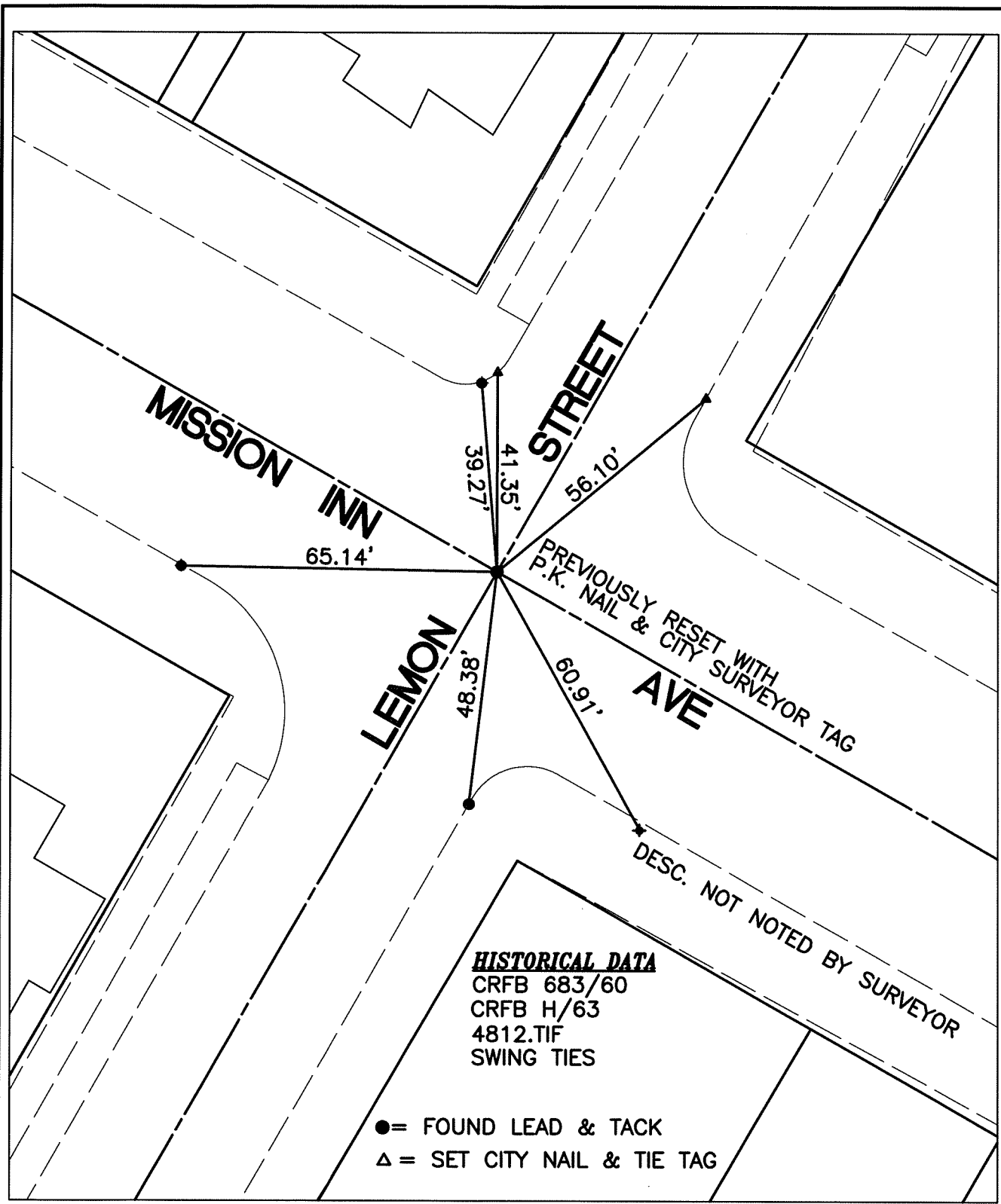


6683.TIF

STREET: MISSION INN AVE
OFFICIAL USE ONLY
X-STREET: LEMON STREET



SCALE: 1"=30'

DATE: 09.20.2010

DRAWN BY: BDURENTE

F.B.: SEE HISTORICAL DATA

SEC: 23 T.2 S., R.5 W

OFFICIAL TIE PLAT
 CITY OF RIVERSIDE

THESE TIES ARE FOR THE PURPOSE OF PERPETUATING THE FOUND MONUMENTATION. NO CLAIM IS MADE AS THE RELATIONSHIP OF THE POINTS OR LINES SHOWN HEREON TO TRUE BOUNDARY LOCATIONS

