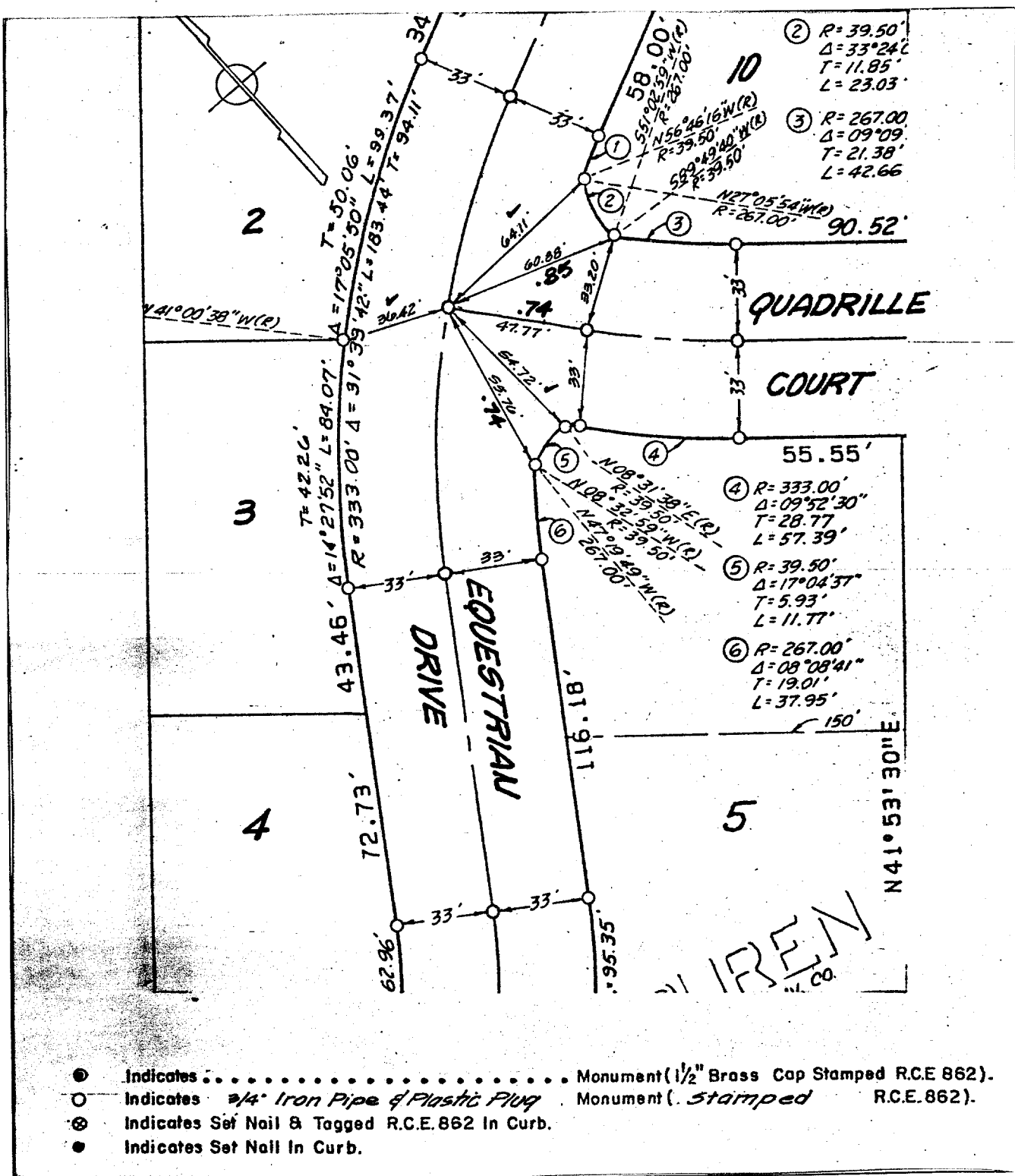


Street: **QUADRILLE CT**
6722, T1E
 X-Street: **EQUESTRIAN DRIVE**
 OFFICIAL USE ONLY



- Indicates Monument (1/2" Brass Cap Stamped R.C.E. 862).
- Indicates 3/4" Iron Pipe & Plastic Plug Monument (Stamped R.C.E. 862).
- ⊗ Indicates Set Nail & Tagged R.C.E. 862 In Curb.
- Indicates Set Nail In Curb.

- ✕ FD. Ramset Nail on T/C
- FD. LD. & TK. on T/C
- FD. "C" Nail on T/C
- Set LD. & TK. on T/C

Scale: 1" = 50'
 Date: JUNE 1978
 Drawn by:
 W.O.:
 F.B.:

OFFICIAL TIE PLAT
CITY OF RIVERSIDE

These ties are for the purpose of perpetuating the found monumentation. No claim is made as to the relationship of the points or lines shown hereon to true boundary locations.

TRACT 7518-1
 Sheet 2 of 2
 File No.: