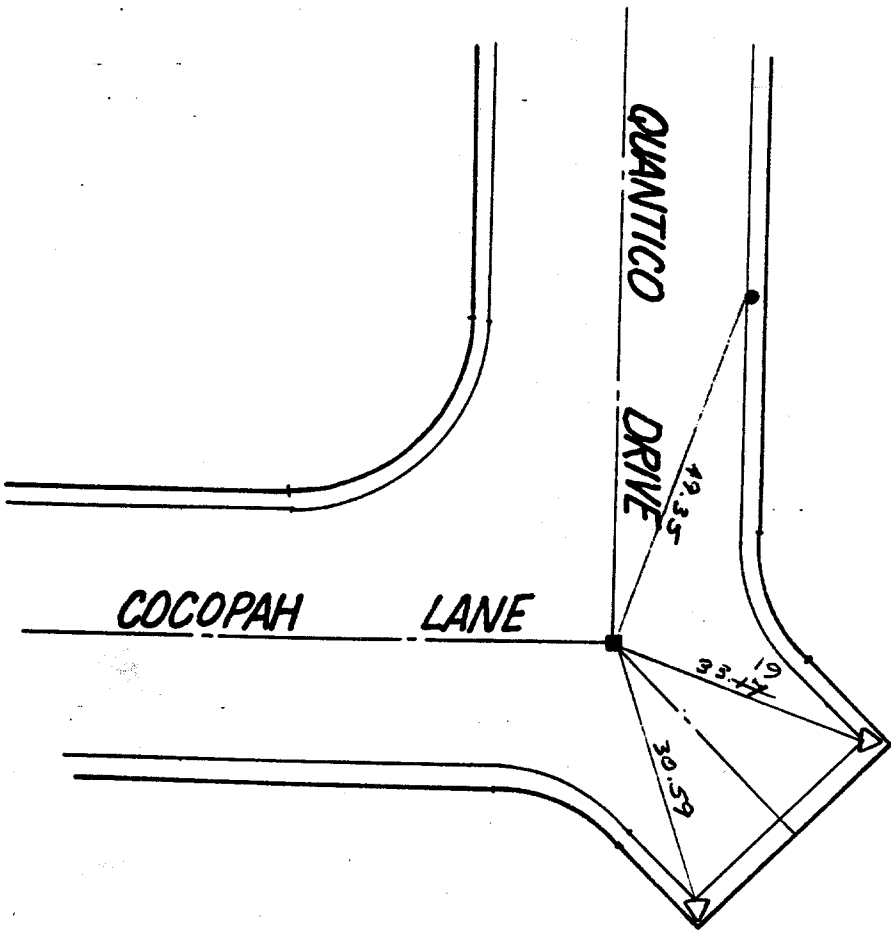


Street: QUANTICO DRIVE X-Street: COCOPAH LANE
6725.TIF OFFICIAL USE ONLY

SERRANO COUNTY

TRACT 17216-5

- - SET LEAD & T.M.G. 5390
- △ - SET LEAD & T.M.G.
- - SET SPR: WASHER L.S. 5390



ADKIN ENGINEERS
 6869 Airport Dr. Suite 32
 Riverside Ca. 92504
 (714) 688-0241

- ✕ FD. Ramset Nail on T/C
- FD. LD. & TK. on T/C
- FD. "C" Nail on T/C
- Set LD. & TK. on T/C

Scale: _____
 Date: _____
 Drawn by: _____
 W.O.: _____
 F.B.: _____

OFFICIAL TIE PLAT
 CITY OF RIVERSIDE

These ties are for the purpose of perpetuating the found monumentation. No claim is made as to the relationship of the points or lines shown hereon to true boundary locations.

Sheet 1 of 1
 File No.: _____