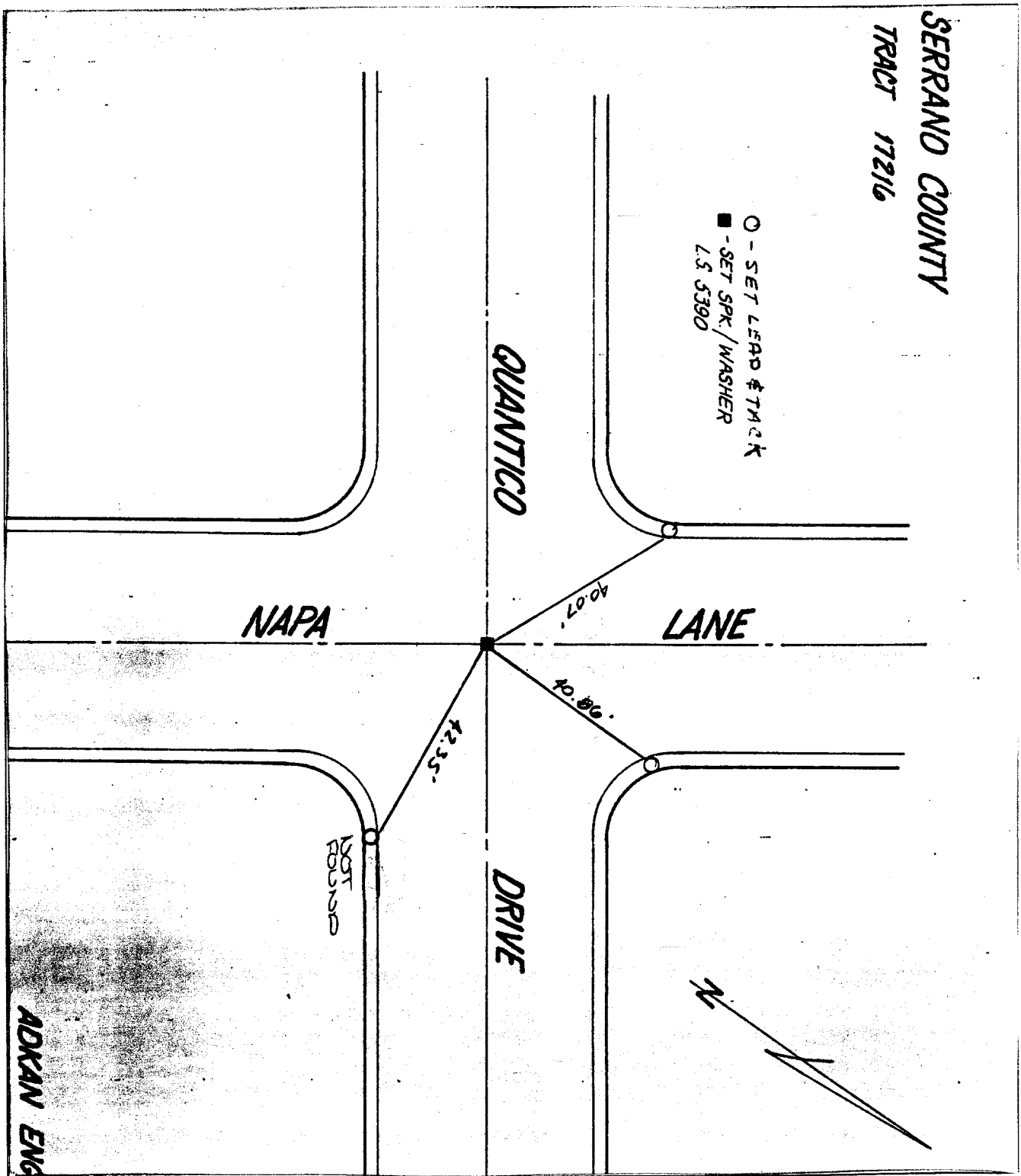


Street: QUANTICO DRIVE X-Street: NAPA LANE  
6727. TIF OFFICIAL USE ONLY

SERRANO COUNTY  
 TRACT 17216



○ - SET LEAD & TACK  
 ■ - SET SPK / WASHER  
 L.S. 5390

- × FD. Ramset Nail on T/C
- FD. LD. & TK. on T/C
- FD. "C" Nail on T/C
- Set LD. & TK. on T/C

Scale:  
 Date:  
 Drawn by:  
 W.O.:  
 F.B.:

**OFFICIAL TIE PLAT**  
**CITY OF RIVERSIDE**

*These ties are for the purpose of perpetuating the found monumentation. No claim is made as to the relationship of the points or lines shown hereon to true boundary locations.*

Sheet 1 of 1  
 File No.: