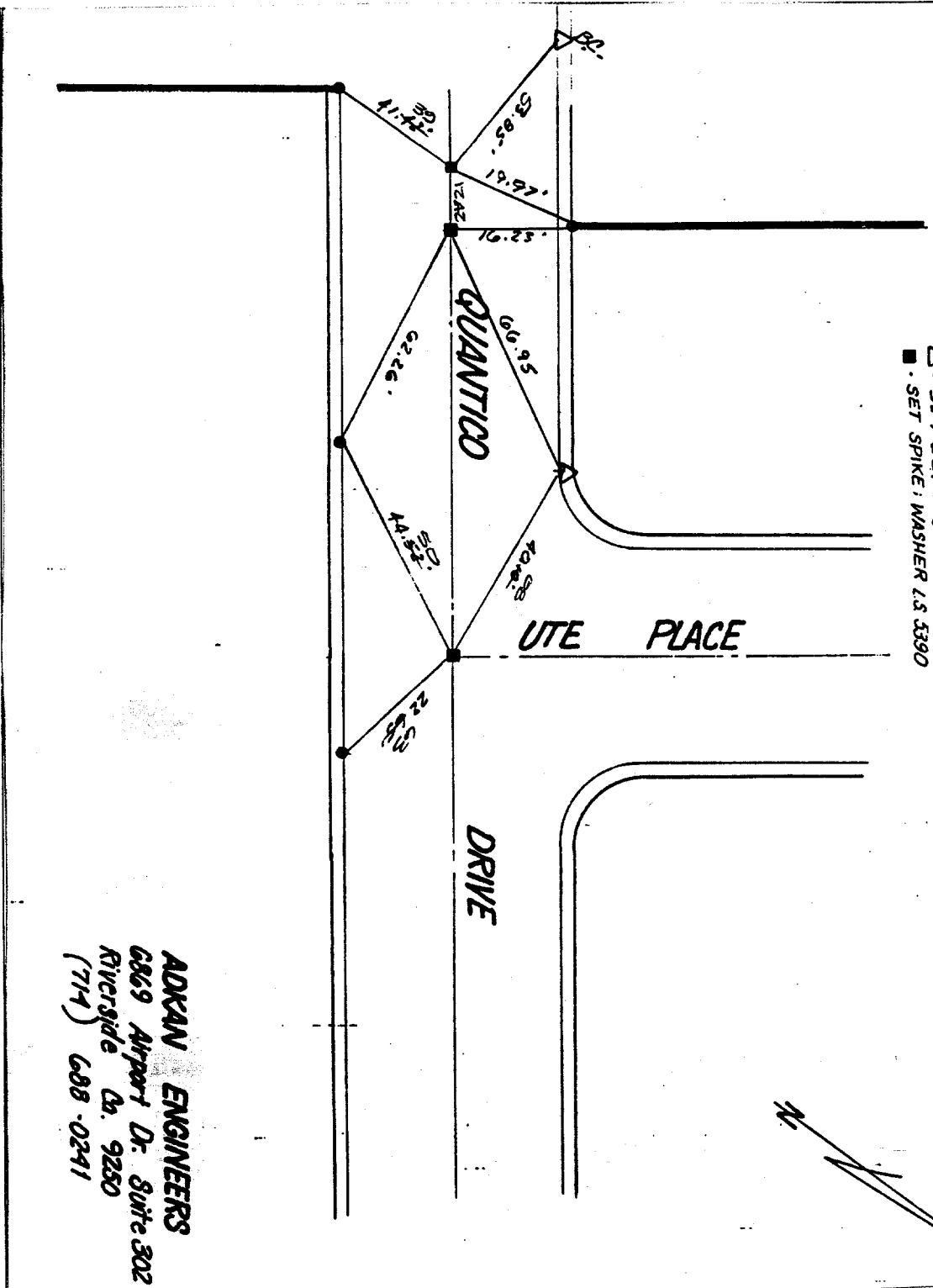


Street: QUANTICO DRIVE X-Street: UTE PLACE
6728.TIF OFFICIAL USE ONLY

SERRANO COUNTY
 TRACT 17216-5

- - SET LEAD & TAG L.S. 5370
- △ - SET LEAD & TAG
- - SET SPIKE: WASHER L.S. 5390



ADKIN ENGINEERS
 6869 Airport Dr. Suite 302
 Riverside Ca. 9250
 (714) 688-0241

- × FD. Ramset Nail on T/C
- FD. LD. & TK. on T/C
- FD. "C" Nail on T/C
- Set LD. & TK. on T/C

Scale:
 Date:
 Drawn by:
 W.O.:
 F.B.:

OFFICIAL TIE PLAT
 CITY OF RIVERSIDE

These ties are for the purpose of perpetuating the found monumentation. No claim is made as to the relationship of the points or lines shown hereon to true boundary locations.

Sheet 1 of 1
 File No.: