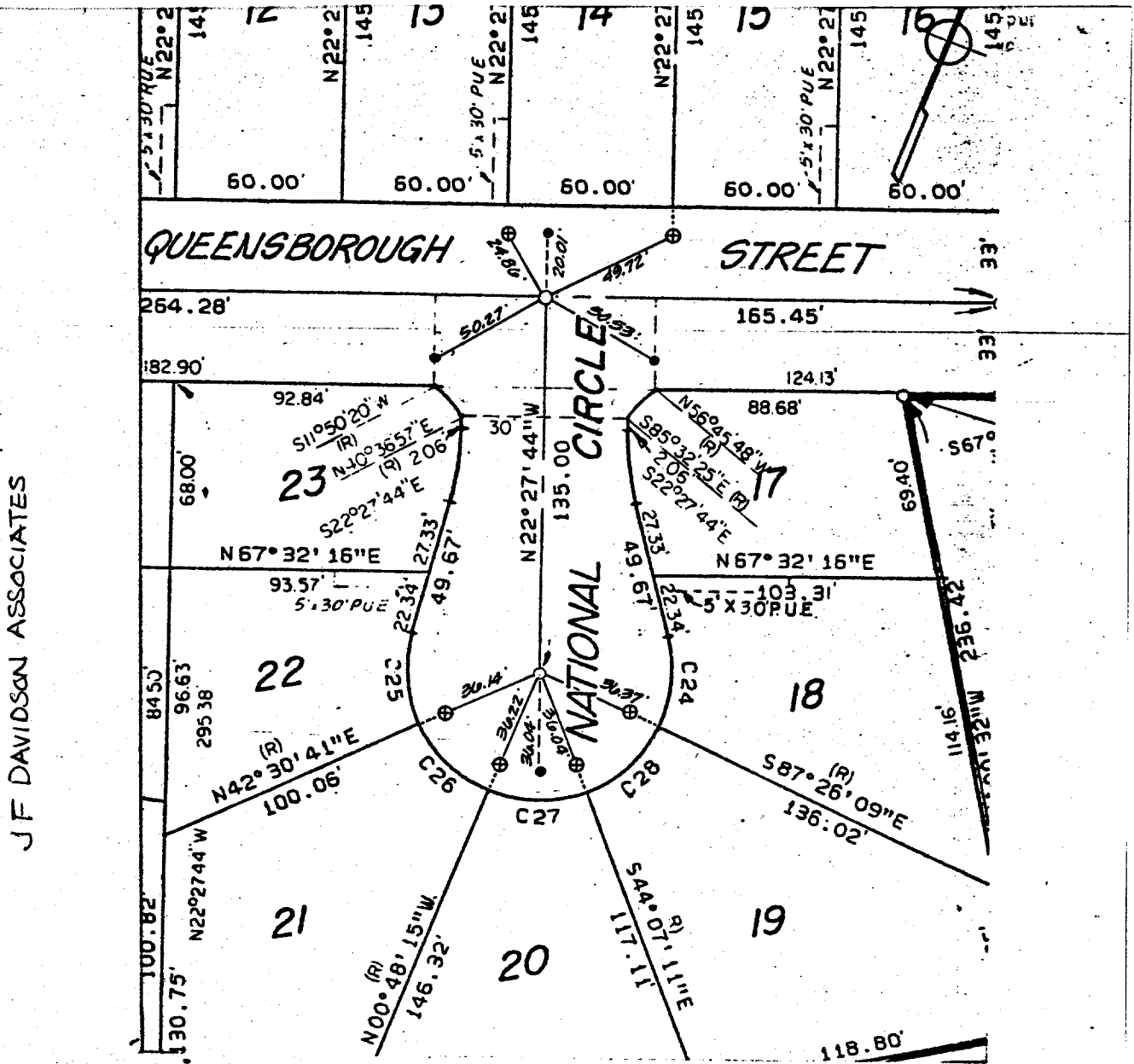


Street: QUEENSBOROUGH ST
6741.TIE
 X-Street: NATIONAL CIRCLE
 OFFICIAL USE ONLY



J.F. DAVIDSON ASSOCIATES

- Indicates Monument (1/2" Brass Cap Stamped R.C.E. 862).
- Indicates 3/4" Iron Pipe & Plastic Plug Monument (Stamped R.C.E. 862).
- ⊗ Indicates Set Nail & Tagged R.C.E. 862 in Curb.
- Indicates Set Nail in Curb.

FIELD CHECKED
 5/11/79
 TIES NOT PULLED
 MONUMENTS VERIFIED *SM*

- ⊗ FD. Ramset Nail on T/C
- FD. "C" Nail on T/C
- FD. LD. & TK. on T/C
- Set LD. & TK. on T/C

Scale: 1" = 60'
 Date: JUNE 1978
 Drawn by:
 W.O.:
 F.B.:

OFFICIAL TIE PLAT
CITY OF RIVERSIDE

These ties are for the purpose of perpetuating the found monumentation. No claim is made as to the relationship of the points or lines shown hereon to true boundary locations.

TRACT 6756-4
 Sheet 5 of 5
 File No.: