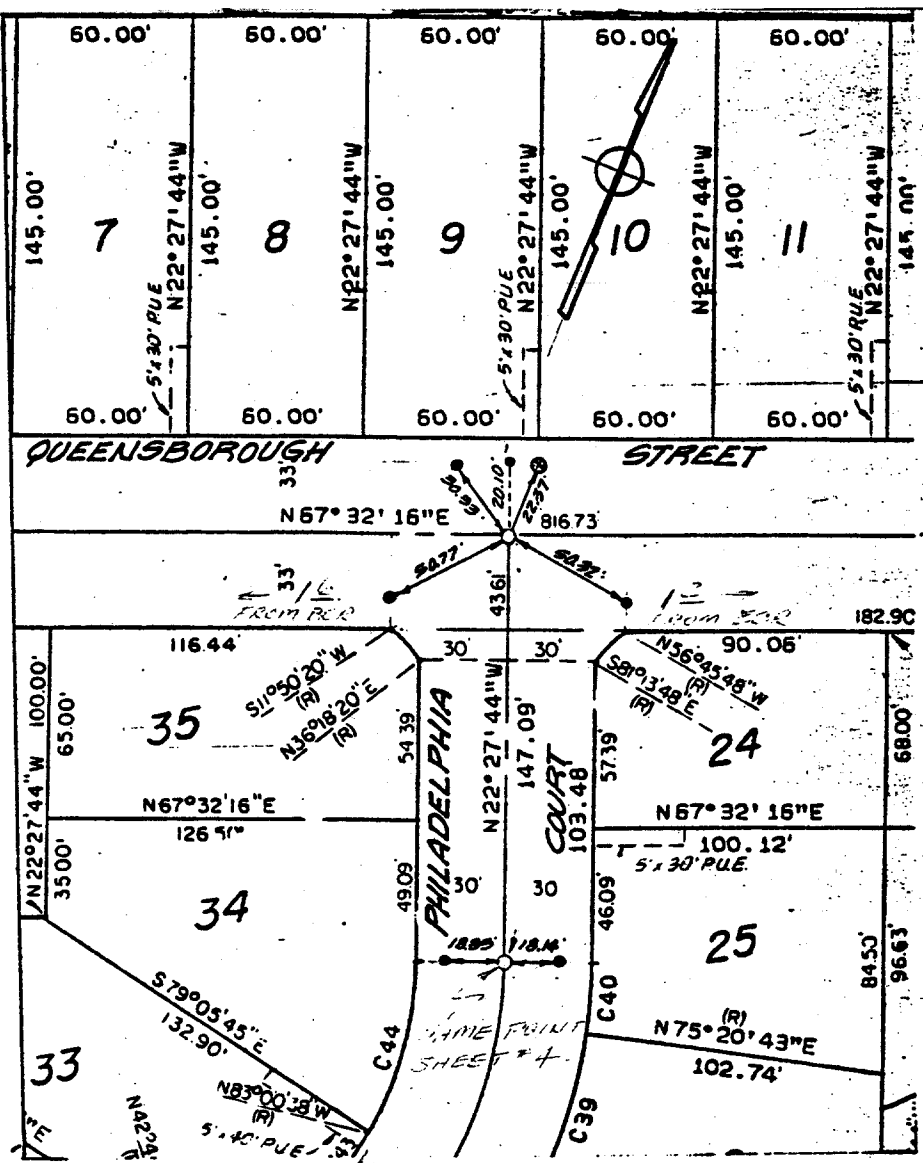


Street: **QUEENSBOROUGH ST.**
6743.71E
 X-Street: **PHILADELPHIA CT**
 OFFICIAL USE ONLY



- Indicates Monument (1/2" Brass Cap Stamped R.C.E. 862).
- Indicates 3/4" Iron Pipe & Plastic Plug Monument (Stamped R.C.E. 862).
- ⊗ Indicates Set Nail & Tagged R.C.E. 862 In Curb.
- Indicates Set Nail In Curb.

FIELD CHECKED
5/11/79
TIES NOT PULLED
MONUMENTS VERIFIED

LE DAVIDSON ASSOCIATES 3426 TENTH STREET	MONUMENT TIES FOR TRACT 6756-4	SHEET NO. <u>3</u> OF <u>5</u> DATE <u>June 1978</u>
---	---	---

- ⊗ FD. Ramset Nail on T/C
- FD. "C" Nail on T/C
- FD. LD. & TK. on T/C
- Set LD. & TK. on T/C

Scale:	<h2 style="margin: 0;">OFFICIAL TIE PLAT</h2> <h3 style="margin: 0;">CITY OF RIVERSIDE</h3> <p style="margin: 5px 0;">These ties are for the purpose of perpetuating the found monumentation. No claim is made as to the relationship of the points or lines shown hereon to true boundary locations.</p>	
Date:		
Drawn by:		
W.O.:		Sheet 3 of 5
F.B.:		File No.: