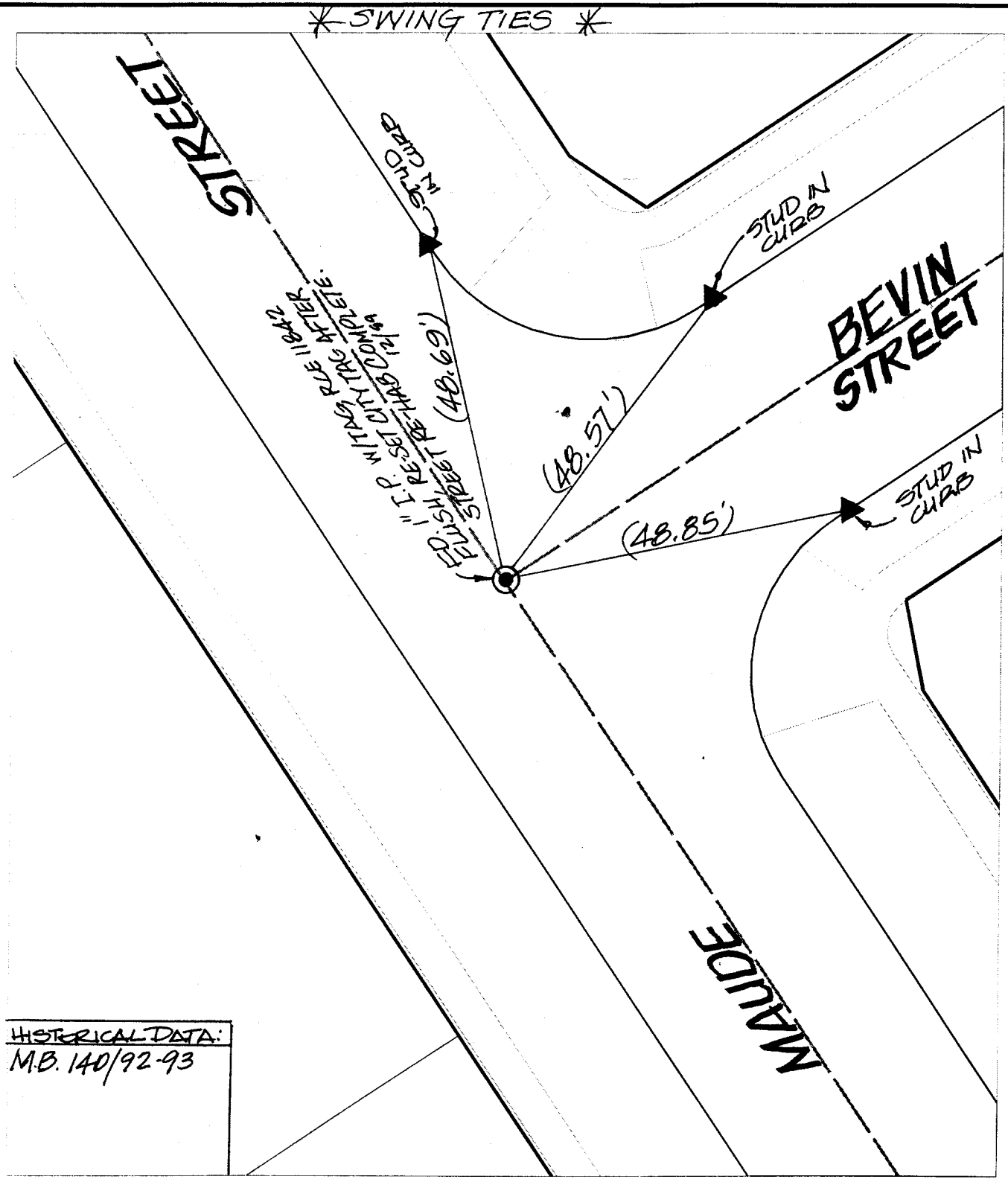


Street: MAUDE STREET X-Street: BEVIN STREET 675.71E
 OFFICIAL USE ONLY



HISTORICAL DATA:
 M.B. 140/92-93

- ✕ FD. Ramset Nail on T/C
- FD. LD. & TK. on T/C
- FD. "C" Nail on T/C
- Set LD. & TK. on T/C

Scale: 1" = 20'
 Date: 09/11/98, 12/99
 Drawn by: scurtis, KGE
 W.O.:
 F.B.:

OFFICIAL TIE PLAT

CITY OF RIVERSIDE



These ties are for the purpose of perpetuating the found monumentation. No claim is made as to the relationship of the points or lines shown hereon to true boundary locations.

Sheet 1 of 1
 File No.: